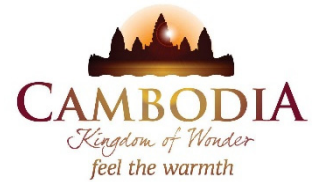




KINGDOM OF CAMBODIA
NATION RELIGION KING



TOURISM STATISTICS REPORT

July 2019

MINISTRY OF TOURISM
NATIONAL INSTITUTE OF TOURISM
TOURISM STATISTICS DEPARTMENT
No. A3, Street 169, Sangkat Veal Vong, Khan 7 Makara, Phnom Penh, Cambodia.
Fax: +855 23 885003
E-mail: kong@tourism.gov.kh
Website: www.tourism.gov.kh

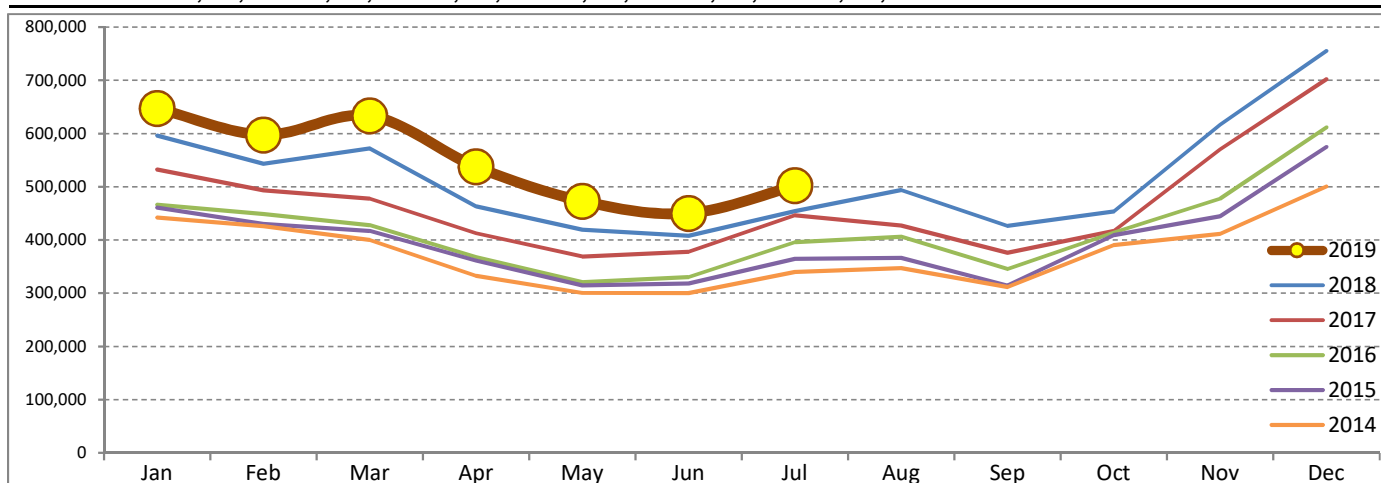
Tourism Highlights

Int'l Tourist Arrivals, Average Length of Stays, Hotel Occupancy & Int'l Tourism Receipts 1993 - 2018

Years	Int'l Tourist Arrivals		Average Length	Hotel Occupancy	Int'l Tourism Receipts
	Number	Change (%)	of Stays (Days)	(%)	(Million US\$)
1993	118,183	-	N/A	N/A	N/A
1994	176,617	49.4	N/A	N/A	N/A
1995	219,680	24.4	8.00	37.0	100
1996	260,489	18.6	7.50	40.0	118
1997	218,843	-16.0	6.40	30.0	103
1998	286,524	30.9	5.20	40.0	166
1999	367,743	28.3	5.50	44.0	190
2000	466,365	26.8	5.50	45.0	228
2001	604,919	29.7	5.50	48.0	304
2002	786,524	30.0	5.80	50.0	379
2003	701,014	-10.9	5.50	50.0	347
2004	1,055,202	50.5	6.30	52.0	578
2005	1,421,615	34.7	6.30	52.0	832
2006	1,700,041	19.6	6.50	54.8	1,049
2007	2,015,128	18.5	6.50	54.8	1,400
2008	2,125,465	5.5	6.65	62.7	1,595
2009	2,161,577	1.7	6.45	63.6	1,561
2010	2,508,289	16.0	6.45	65.7	1,786
2011	2,881,862	14.9	6.50	66.2	1,912
2012	3,584,307	24.4	6.30	68.5	2,210
2013	4,210,165	17.5	6.75	69.5	2,547
2014	4,502,775	7.0	6.50	67.6	2,736
2015	4,775,231	6.1	6.80	70.2	3,012
2016	5,011,712	5.0	6.30	68.9	3,212
2017	5,602,157	11.8	6.60	71.3	3,638
2018	6,201,077	10.7	7.00	72.2	4,375

International Tourist Arrivals to Cambodia

Months	2014	2015	2016	2017	2018	2019	Change (%)				
							15/14	16/15	17/16	18/17	2019*/18
Q1	1,267,922	1,307,836	1,342,477	1,502,896	1,711,253	1,877,853	3.1	2.6	11.9	13.9	9.7
Jan	442,045	460,577	466,086	532,206	596,241	647,206	4.2	1.2	14.2	12.0	8.5
Feb	425,801	430,207	448,468	493,316	542,937	597,483	1.0	4.2	10.0	10.1	10.0
Mar	400,076	417,052	427,923	477,374	572,075	633,164	4.2	2.6	11.6	19.8	10.7
Q2	933,446	994,154	1,018,455	1,159,783	1,290,407	1,460,621	6.5	2.4	13.9	11.3	13.2
Apr	332,690	361,139	367,684	412,925	463,423	537,656	8.6	1.8	12.3	12.2	16.0
May	300,302	314,748	320,601	368,809	419,171	472,952	4.8	1.9	15.0	13.7	12.8
Jun	300,454	318,267	330,170	378,049	407,813	450,013	5.9	3.7	14.5	7.9	10.3
Q3	998,690	1,044,880	1,147,483	1,250,082	1,374,373	502,421	4.6	9.8	8.9	9.9	
Jul	340,091	364,325	395,761	446,627	454,056	502,421	7.1	8.6	12.9	1.7	10.7
Aug	347,211	366,096	406,214	427,224	494,043		5.4	11.0	5.2	15.6	
Sep	311,388	314,459	345,508	376,231	426,274		1.0	9.9	8.9	13.3	
Q4	1,302,717	1,428,361	1,503,297	1,689,396	1,825,044	0	9.6	5.2	12.4	8.0	
Oct	390,637	408,922	414,077	417,039	453,370		4.7	1.3	0.7	8.7	
Nov	411,501	444,640	477,686	570,471	616,549		8.1	7.4	19.4	8.1	
Dec	500,579	574,799	611,534	701,886	755,125		14.8	6.4	14.8	7.6	
Total	4,502,775	4,775,231	5,011,712	5,602,157	6,201,077	3,840,895	6.1	5.0	11.8	10.7	11.1



Source: Tourism Statistics Department, MOT

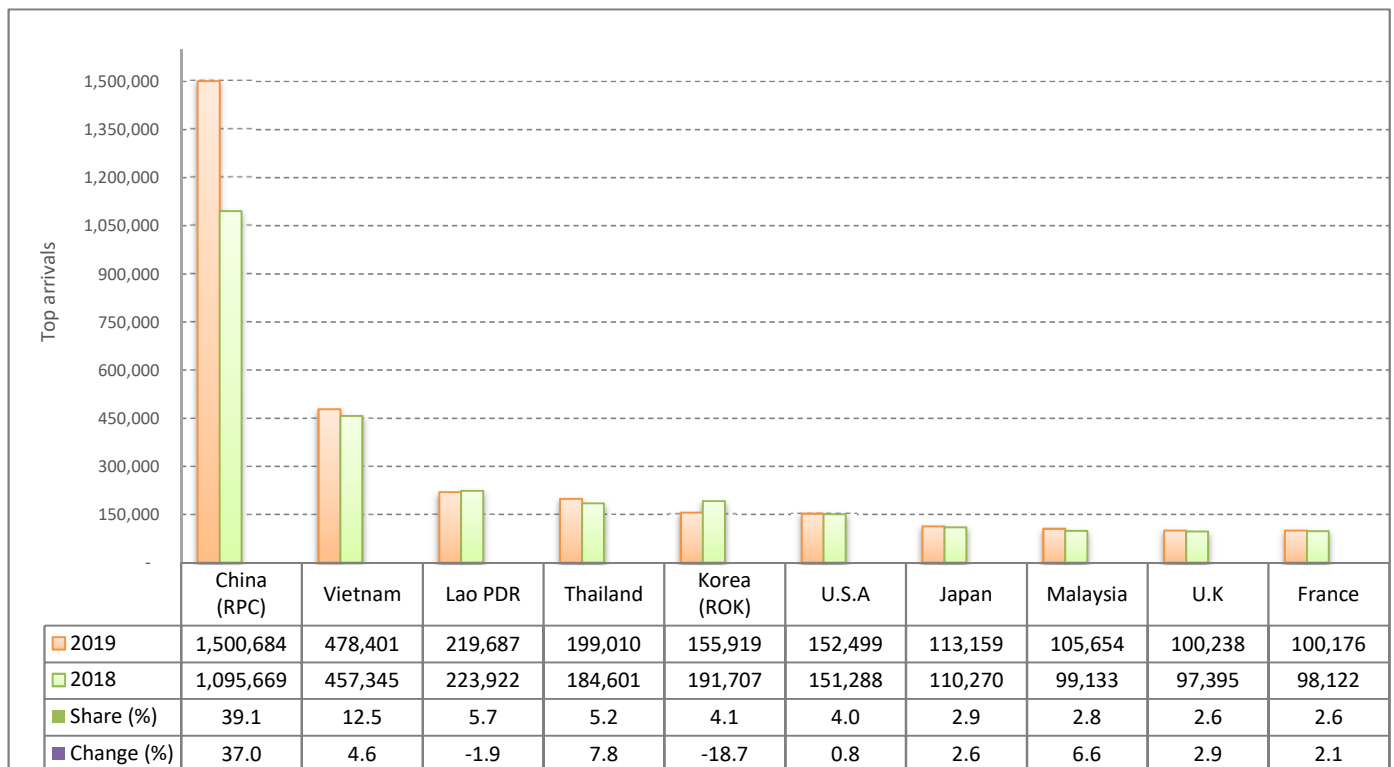
CAMBODIA: TOURISM STATISTICS REPORT IN THE FIRST SEVEN MONTHS 2019

I. INBOUND TOURISM

1. International tourist arrivals in January - July 2019

	Inbound tourism			Share (%) 2019*	Change (%)	
	2017	2018	2019		18/17	2019*/18
Air	1,876,039	2,312,798	2,735,042	71.2	23.3	18.3
Phnom Penh Int'l Airport (PNH)	794,262	1,075,119	1,258,414	32.8	35.4	17.0
Siem Reap Int'l Airport (REP)	1,039,665	1,149,336	1,067,917	27.8	10.5	-7.1
Kong Keng (KOS)	42,112	88,343	408,711	10.6	109.8	362.6
Land and Waterways	1,233,267	1,142,918	1,105,853	28.8	-7.3	-3.2
Land	1,137,022	1,056,880	1,015,365	26.4	-7.0	-3.9
Waterways	96,245	86,038	90,488	2.4	-10.6	5.2
Total	3,109,306	3,455,716	3,840,895	100.0	11.1	11.1

2. Top ten markets arrivals in January - July 2019



II. OUTBOUND TOURISM

Outbound tourism in January - July 2019

	Outbound tourism			Change (%)	
	2017	2018	2019	18/17	2019*/18
Cambodian Outbound Tourists	998,709	1,105,000	1,171,446	10.6	6.0
International Tourists Departure	2,963,435	3,338,412	3,607,088	12.7	8.0

III. INTERNAL TOURISM

Foreign visitor arrivals to the regions in January - July 2019

	Arrivals			Share (%) 2019*	Change (%)	
	2017	2018	2019		18/17	2019*/18
Phnom Penh & Surrounding	1,693,278	1,912,867	2,447,183	53.3	13.0	27.9
Siem Reap Angkor	1,416,028	1,542,839	1,393,712	30.4	9.0	-9.7
Coastal Areas	438,387	527,880	696,537	15.2	20.4	31.9
Eco-tourism Areas	43,344	47,003	51,417	1.1	8.4	9.4
Total	3,591,037	4,030,589	4,588,849	100.0	12.2	13.9

International Tourist Arrivals to Cambodia by Country of Residence in January - July 2019

(by all means of transportation)

Regions Country of Residence	2018	2019			Total	Female	Share	Change
		Purposes of Visit					2019*	2019*/18
		Holiday	Business	Others			(%)	(%)
Grand Total	3,455,716	2,887,295	839,112	114,488	3,840,895	1,582,353	100.0	11.1
Asia and the Pacific	2,722,309	2,281,564	808,803	53,161	3,143,528	1,260,493	81.8	15.5
ASEAN (Southeast Asia)	1,097,941	1,039,608	91,419	23,759	1,154,786	501,437	30.1	5.2
Brunei Darussalam	422	660	12	22	694	341	0.0	64.5
Indonesia	29,646	20,380	15,202	1,010	36,592	10,702	1.0	23.4
Lao PDR	223,922	212,900	573	6,214	219,687	89,314	5.7	-1.9
Malaysia	99,133	91,062	12,898	1,694	105,654	31,608	2.8	6.6
Myanmar	11,945	9,516	3,718	500	13,734	5,700	0.4	15.0
Philippines	49,041	47,167	8,879	906	56,952	34,269	1.5	16.1
Singapore	41,886	40,044	3,203	815	44,062	13,629	1.1	5.2
Thailand	184,601	175,367	16,849	6,794	199,010	71,408	5.2	7.8
Vietnam	457,345	442,512	30,085	5,804	478,401	244,466	12.5	4.6
Northeast Asia	1,484,012	1,131,719	706,485	15,697	1,853,901	709,227	48.3	24.9
China	1,095,669	836,843	658,220	5,621	1,500,684	566,628	39.1	37.0
Hong Kong (China)	7,037	1,278	94	65	1,437	303	0.0	-79.6
Japan	110,270	93,633	16,862	2,664	113,159	43,807	2.9	2.6
Korea (ROK)	191,707	138,310	13,121	4,488	155,919	65,843	4.1	-18.7
Macau (China)	326	99	30	20	149	28	0.0	-54.3
Mongolia	494	693	38	37	768	361	0.0	55.5
Taiwan (China)	78,509	60,863	18,120	2,802	81,785	32,257	2.1	4.2
Southern Asia	42,615	43,377	6,041	723	50,141	13,000	1.3	17.7
Afghanistan	161	121	18	15	154	41	0.0	-4.3
Bangladesh	1,607	2,829	582	113	3,524	438	0.1	119.3
Bhutan	118	122	10	24	156	58	0.0	32.2
India	34,706	33,857	4,068	277	38,202	10,710	1.0	10.1
Iran	709	672	37	29	738	253	0.0	4.1
Nepal	1,557	1,818	308	136	2,262	641	0.1	45.3
Pakistan	1,787	2,176	370	68	2,614	351	0.1	46.3
Sri Lanka	1,970	1,782	648	61	2,491	508	0.1	26.4
Oceania	89,638	65,783	4,528	12,587	82,898	36,144	2.2	-7.5
Australia	74,978	55,552	3,842	9,928	69,322	30,296	1.8	-7.5
Fiji	146	133	43	38	214	65	0.0	46.6
New Zealand	14,514	10,098	643	2,621	13,362	5,783	0.3	-7.9
Other Asia & the Pacific	8,103	1,077	330	395	1,802	685	0.0	-77.8
Europe	494,027	426,865	19,373	22,819	469,057	213,470	12.2	-5.1
Northern Europe	136,289	126,131	5,933	1,879	133,943	58,597	3.5	-1.7
Denmark	8,994	7,793	251	137	8,181	3,823	0.2	-9.0
Finland	4,628	3,447	158	94	3,699	1,614	0.1	-20.1
Iceland	559	483	25	24	532	239	0.0	-4.8
Ireland	7,628	6,786	342	87	7,215	3,240	0.2	-5.4
Norway	6,733	4,985	160	161	5,306	2,480	0.1	-21.2
Sweden	10,352	8,046	398	328	8,772	3,638	0.2	-15.3
United Kingdom	97,395	94,591	4,599	1,048	100,238	43,563	2.6	2.9
Western Europe	206,206	174,069	9,040	19,130	202,239	88,775	5.3	-1.9
Austria	7,047	6,154	189	282	6,625	3,029	0.2	-6.0
Belgium	11,147	10,824	487	587	11,898	5,539	0.3	6.7
France	98,122	79,066	5,458	15,652	100,176	44,055	2.6	2.1
Germany	59,492	51,630	1,513	1,158	54,301	23,216	1.4	-8.7
Luxembourg	434	349	33	23	405	162	0.0	-6.7
Monaco	56	27	9	11	47	12	0.0	-16.1
Netherlands	17,313	15,933	813	499	17,245	7,739	0.4	-0.4
Switzerland	12,595	10,086	538	918	11,542	5,023	0.3	-8.4
Central / Eastern Europe	83,237	66,475	2,107	952	69,534	36,378	1.8	-16.5
Bulgaria	1,967	1,713	56	51	1,820	780	0.0	-7.5
Czech Republic	4,824	4,280	82	66	4,428	1,986	0.1	-8.2
Estonia	2,493	717	37	24	778	339	0.0	-68.8
Hungary	3,564	3,777	83	43	3,903	1,905	0.1	9.5
Kazakhstan	1,277	1,131	210	41	1,382	667	0.0	8.2
Kyrgyzstan	199	166	33	18	217	119	0.0	9.0
Latvia	961	660	41	18	719	376	0.0	-25.2
Lithuania	1,515	1,349	37	18	1,404	758	0.0	-7.3
Poland	12,086	10,994	153	62	11,209	5,606	0.3	-7.3
Romania	2,218	1,878	93	74	2,045	1,033	0.1	-7.8
Russian Federation	44,943	33,327	888	399	34,614	19,030	0.9	-23.0
Slovakia	2,407	1,815	62	43	1,920	909	0.0	-20.2
Ukraine	4,418	4,424	273	53	4,750	2,723	0.1	7.5
Uzbekistan	365	244	59	42	345	147	0.0	-5.5

International Tourist Arrivals to Cambodia by Country of Residence in January - July 2019

(by all means of transportation)

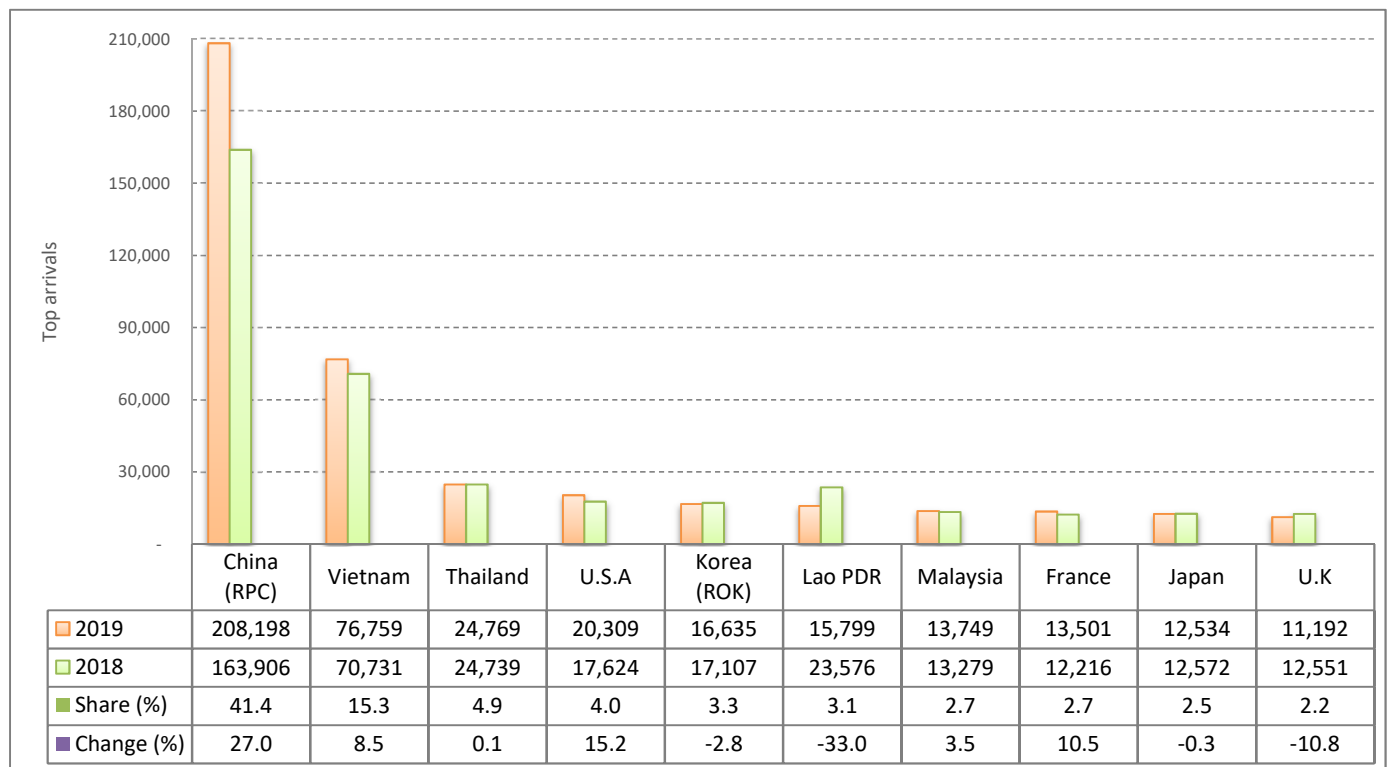
Regions Country of Residence	2018	2019			Total	Female	Share	Change
		Purposes of Visit					2019*	2019*/18
		Holiday	Business	Others			(%)	(%)
Grand Total	3,455,716	2,887,295	839,112	114,488	3,840,895	1,582,353	100.0	11.1
Southern Europe	49,659	46,835	1,686	564	49,085	23,368	1.3	-1.2
Croatia	1,385	861	45	30	936	433	0.0	-32.4
Greece	1,193	990	52	39	1,081	471	0.0	-9.4
Italy	20,250	20,441	825	223	21,489	9,952	0.6	6.1
Malta	256	250	13	14	277	118	0.0	8.2
Portugal	3,799	4,267	123	42	4,432	2,225	0.1	16.7
Serbia	783	710	32	36	778	412	0.0	-0.6
Slovenia	983	910	65	28	1,003	378	0.0	2.0
Spain	21,010	18,406	531	152	19,089	9,379	0.5	-9.1
East Mediterranean Europe	13,699	12,892	472	180	13,544	6,069	0.4	-1.1
Israel	8,661	9,463	247	63	9,773	4,463	0.3	12.8
Turkey	5,038	3,429	225	117	3,771	1,606	0.1	-25.1
Other Europe	4,937	463	135	114	712	283	0.0	-85.6
Americas	228,252	169,794	9,691	38,008	217,493	104,343	5.7	-4.7
North America	194,937	149,503	9,121	37,597	196,221	92,964	5.1	0.7
Canada	38,548	31,406	1,956	4,602	37,964	17,501	1.0	-1.5
Mexico	5,101	5,571	105	82	5,758	2,958	0.1	12.9
United States of America	151,288	112,526	7,060	32,913	152,499	72,505	4.0	0.8
Central America	1,354	683	52	39	774	378	0.0	-42.8
Costa Rica	1,027	466	16	18	500	233	0.0	-51.3
Honduras	121	90	23	10	123	72	0.0	1.7
Jamaica	206	127	13	11	151	73	0.0	-26.7
South America	29,906	19,377	441	314	20,132	10,856	0.5	-32.7
Argentina	8,567	4,042	50	35	4,127	2,159	0.1	-51.8
Brazil	8,726	6,243	125	56	6,424	3,419	0.2	-26.4
Chile	4,195	3,457	96	42	3,595	1,903	0.1	-14.3
Colombia	5,587	2,296	76	66	2,438	1,332	0.1	-56.4
Ecuador	432	345	22	30	397	193	0.0	-8.1
Peru	1,180	908	20	37	965	592	0.0	-18.2
Uruguay	1,017	1,848	23	25	1,896	1,108	0.0	86.4
Venezuela	202	238	29	23	290	150	0.0	43.6
Other America	2,055	231	77	58	366	145	0.0	-82.2
Africa	8,131	6,300	969	274	7,543	3,357	0.2	-7.2
North Africa	846	1,206	45	46	1,297	592	0.0	53.3
Morocco	518	492	20	16	528	213	0.0	1.9
Sudan	126	102	10	18	130	40	0.0	3.2
Tunisia	202	612	15	12	639	339	0.0	216.3
Subsaharan Africa	6,920	4,994	890	200	6,084	2,707	0.2	-12.1
Cameroon	152	155	28	23	206	55	0.0	35.5
Congo	211	117	12	11	140	40	0.0	-33.6
Ghana	327	164	29	17	210	31	0.0	-35.8
Kenya	321	197	30	32	259	138	0.0	-19.3
Liberia	1,291	220	12	11	243	47	0.0	-81.2
Nigeria	329	118	218	38	374	58	0.0	13.7
South Africa	4,053	3,606	514	31	4,151	2,105	0.1	2.4
Tanzania	70	121	11	9	141	34	0.0	101.4
Uganda	67	203	16	20	239	121	0.0	256.7
Zimbabwe	99	93	20	8	121	78	0.0	22.2
Other Africa	365	100	34	28	162	58	0.0	-55.6
Middle East	2,997	2,772	276	226	3,274	690	0.1	9.2
Egypt	448	519	54	21	594	137	0.0	32.6
Iraq	449	157	20	59	236	36	0.0	-47.4
Jordan	312	310	47	17	374	69	0.0	19.9
Kuwait	272	226	29	28	283	57	0.0	4.0
Oman	126	156	14	9	179	41	0.0	42.1
Palestine	86	52	10	8	70	7	0.0	-18.6
Qatar	61	44	12	9	65	6	0.0	6.6
Saudi Arabia	178	195	13	16	224	29	0.0	25.8
Syria	278	295	18	14	327	62	0.0	17.6
United Arab Emirates	140	410	28	12	450	151	0.0	221.4
Yemen	357	338	13	16	367	56	0.0	2.8
Other Middle East	290	70	18	17	105	39	0.0	-63.8

I. INBOUND TOURISM

1. International tourist arrivals in July 2019

	Inbound tourism			Share (%) 2019*	Change (%)	
	2017	2018	2019		18/17	2019*/18
Air	270,375	308,675	381,095	75.9	14.2	23.5
Phnom Penh Int'l Airport (PNH)	126,733	147,577	176,454	35.1	16.4	19.6
Siem Reap Int'l Airport (REP)	135,281	142,832	116,564	23.2	5.6	-18.4
Kong Keng (KOS)	8,361	18,266	88,077	17.5	118.5	382.2
Land and Waterways	176,252	145,381	121,326	24.1	-17.5	-16.5
Land	169,532	138,271	117,750	23.4	-18.4	-14.8
Waterways	6,720	7,110	3,576	0.7	5.8	-49.7
Total	446,627	454,056	502,421	100.0	1.7	10.7

2. Top ten markets arrivals in July 2019



II. OUTBOUND TOURISM

Outbound tourism in July 2019

	Outbound tourism			Change (%)	
	2017	2018	2019	18/17	2019*/18
Cambodian Outbound Tourists	156,701	140,724	166,379	-10.2	18.2
International Tourists Departure	418,524	445,720	502,542	6.5	12.7

III. INTERNAL TOURISM

Foreign visitor arrivals to the regions in July 2019

	Arrivals			Share (%) 2019*	Change (%)	
	2017	2018	2019		18/17	2019*/18
Phnom Penh & Surrounding	263,995	268,178	316,543	55.6	1.6	18.0
Siem Reap Angkor	182,632	185,878	149,269	26.2	1.8	-19.7
Coastal Areas	48,646	56,941	98,491	17.3	17.1	73.0
Eco-tourism Areas	3,976	4,947	5,225	0.9	24.4	5.6
Total	499,249	515,944	569,528	100.0	3.3	10.4

International Tourist Arrivals to Cambodia by Country of Residence in July 2019

(by all means of transportation)

Regions Country of Residence	2018	2019			Total	Female	Share	Change
		Purposes of Visit					2019*	2019*/18
		Holiday	Business	Others			(%)	(%)
Grand Total	454,056	341,812	142,555	18,054	502,421	218,022	100.0	10.7
Asia and the Pacific	371,265	276,542	137,769	5,403	419,714	178,556	83.5	13.0
ASEAN (Southeast Asia)	149,187	137,825	12,889	1,149	151,863	79,332	30.2	1.8
Brunei Darussalam	55	47	1	5	53	22	0.0	-3.6
Indonesia	4,028	3,050	2,663	70	5,783	1,812	1.2	43.6
Lao PDR	23,576	15,704	45	50	15,799	7,559	3.1	-33.0
Malaysia	13,279	11,377	2,203	169	13,749	4,046	2.7	3.5
Myanmar	1,298	972	550	28	1,550	743	0.3	19.4
Philippines	6,413	6,248	1,310	58	7,616	4,757	1.5	18.8
Singapore	5,068	5,231	476	78	5,785	1,785	1.2	14.1
Thailand	24,739	21,542	2,839	388	24,769	10,196	4.9	0.1
Vietnam	70,731	73,654	2,802	303	76,759	48,412	15.3	8.5
Northeast Asia	204,045	123,120	122,969	2,483	248,572	92,194	49.5	21.8
China	163,906	92,061	115,231	906	208,198	75,958	41.4	27.0
Hong Kong (China)	348	37	9	10	56	14	0.0	-83.9
Japan	12,572	9,397	2,789	348	12,534	4,664	2.5	-0.3
Korea (ROK)	17,107	13,853	2,153	629	16,635	7,037	3.3	-2.8
Macau (China)	46	2	1	1	4	1	0.0	-91.3
Mongolia	79	59	1	5	65	36	0.0	-17.7
Taiwan (China)	9,987	7,711	2,785	584	11,080	4,484	2.2	10.9
Southern Asia	5,541	6,531	1,081	126	7,738	1,662	1.5	39.6
Afghanistan	10	6	2	2	10	2	0.0	0.0
Bangladesh	199	586	150	30	766	119	0.2	284.9
Bhutan	11	2	1	1	4	2	0.0	-63.6
India	4,473	4,921	705	58	5,684	1,290	1.1	27.1
Iran	48	63	9	3	75	20	0.0	56.3
Nepal	230	306	44	11	361	68	0.1	57.0
Pakistan	315	355	59	12	426	70	0.1	35.2
Sri Lanka	255	292	111	9	412	91	0.1	61.6
Oceania	12,020	8,999	777	1,593	11,369	5,305	2.3	-5.4
Australia	9,928	7,385	626	1,262	9,273	4,325	1.8	-6.6
Fiji	16	11	4	3	18	5	0.0	12.5
New Zealand	2,076	1,603	147	328	2,078	975	0.4	0.1
Other Asia & the Pacific	472	67	53	52	172	63	0.0	-63.6
Europe	55,283	46,719	2,954	5,313	54,986	26,320	10.9	-0.5
Northern Europe	16,757	14,006	921	338	15,265	7,018	3.0	-8.9
Denmark	884	956	36	43	1,035	489	0.2	17.1
Finland	325	190	17	15	222	85	0.0	-31.7
Iceland	18	32	6	2	40	13	0.0	122.2
Ireland	1,609	1,385	51	12	1,448	755	0.3	-10.0
Norway	751	695	17	33	745	335	0.1	-0.8
Sweden	619	469	49	65	583	192	0.1	-5.8
United Kingdom	12,551	10,279	745	168	11,192	5,149	2.2	-10.8
Western Europe	24,103	19,713	1,306	4,775	25,794	12,146	5.1	7.0
Austria	742	673	32	134	839	405	0.2	13.1
Belgium	1,999	2,301	63	167	2,531	1,228	0.5	26.6
France	12,216	8,916	771	3,814	13,501	6,529	2.7	10.5
Germany	4,879	3,717	205	281	4,203	1,809	0.8	-13.9
Luxembourg	39	48	7	2	57	21	0.0	46.2
Monaco	5	3	1	1	5	2	0.0	0.0
Netherlands	2,844	2,839	138	106	3,083	1,432	0.6	8.4
Switzerland	1,379	1,216	89	270	1,575	720	0.3	14.2
Central / Eastern Europe	5,610	4,231	298	86	4,615	2,607	0.9	-17.7
Bulgaria	82	40	4	3	47	26	0.0	-42.7
Czech Republic	354	417	18	8	443	236	0.1	25.1
Estonia	73	34	1	2	37	13	0.0	-49.3
Hungary	213	198	14	5	217	107	0.0	1.9
Kazakhstan	91	70	28	1	99	53	0.0	8.8
Kyrgyzstan	28	17	7	2	26	9	0.0	-7.1
Latvia	90	181	6	3	190	103	0.0	111.1
Lithuania	82	82	7	2	91	55	0.0	11.0
Poland	1,055	757	14	6	777	430	0.2	-26.4
Romania	181	68	6	3	77	40	0.0	-57.5
Russian Federation	2,698	1,985	158	33	2,176	1,292	0.4	-19.3
Slovakia	258	140	9	3	152	73	0.0	-41.1
Ukraine	361	227	14	10	251	157	0.0	-30.5
Uzbekistan	44	15	12	5	32	13	0.0	-27.3

International Tourist Arrivals to Cambodia by Country of Residence in July 2019

(by all means of transportation)

Regions Country of Residence	2018	2019			Total	Female	Share	Change
		Purposes of Visit					2019*	2019*/18
		Holiday	Business	Others			(%)	(%)
Grand Total	454,056	341,812	142,555	18,054	502,421	218,022	100.0	10.7
Southern Europe	7,356	7,812	249	77	8,138	4,091	1.6	10.6
Croatia	160	42	4	3	49	22	0.0	-69.4
Greece	72	97	7	4	108	49	0.0	50.0
Italy	2,049	1,802	129	31	1,962	882	0.4	-4.2
Malta	49	32	1	2	35	18	0.0	-28.6
Portugal	362	460	14	5	479	244	0.1	32.3
Serbia	84	34	2	4	40	4	0.0	-52.4
Slovenia	78	66	12	2	80	38	0.0	2.6
Spain	4,502	5,279	80	26	5,385	2,834	1.1	19.6
East Mediterranean Europe	1,066	936	164	20	1,120	439	0.2	5.1
Israel	636	561	125	8	694	274	0.1	9.1
Turkey	430	375	39	12	426	165	0.1	-0.9
Other Europe	391	21	16	17	54	19	0.0	-86.2
Americas	26,348	17,441	1,634	7,271	26,346	12,659	5.2	10.0
North America	22,019	15,985	1,554	7,224	24,763	11,858	4.9	12.5
Canada	3,605	2,357	302	684	3,343	1,560	0.7	-7.3
Mexico	790	1,083	15	13	1,111	589	0.2	40.6
United States of America	17,624	12,545	1,237	6,527	20,309	9,709	4.0	15.2
Central America	88	123	10	4	137	66	0.0	55.7
Costa Rica	66	45	2	2	49	23	0.0	-25.8
Honduras	16	11	5	1	17	10	0.0	6.3
Jamaica	6	67	3	1	71	33	0.0	1083.3
South America	4,181	1,322	61	36	1,419	726	0.3	-66.1
Argentina	359	203	12	2	217	110	0.0	-39.6
Brazil	643	316	12	5	333	165	0.1	-48.2
Chile	406	206	7	6	219	114	0.0	-46.1
Colombia	2,553	328	11	3	342	189	0.1	-86.6
Ecuador	48	53	6	2	61	31	0.0	27.1
Peru	120	106	3	13	122	59	0.0	1.7
Uruguay	28	81	6	3	90	43	0.0	221.4
Venezuela	24	29	4	2	35	15	0.0	45.8
Other America	60	11	9	7	27	9	0.0	-55.0
Africa	789	777	168	43	988	427	0.2	25.2
North Africa	103	165	5	8	178	76	0.0	72.8
Morocco	52	109	1	6	116	53	0.0	123.1
Sudan	21	22	2	1	25	9	0.0	19.0
Tunisia	30	34	2	1	37	14	0.0	23.3
Subsaharan Africa	672	606	159	32	797	348	0.2	18.6
Cameroon	23	26	5	3	34	10	0.0	47.8
Congo	16	19	2	2	23	8	0.0	43.8
Ghana	10	24	8	1	33	5	0.0	230.0
Kenya	44	25	8	4	37	22	0.0	-15.9
Liberia	11	43	2	1	46	9	0.0	318.2
Nigeria	34	24	26	10	60	12	0.0	76.5
South Africa	503	399	100	7	506	256	0.1	0.6
Tanzania	4	7	1	1	9	5	0.0	125.0
Uganda	14	25	1	2	28	12	0.0	100.0
Zimbabwe	13	14	6	1	21	9	0.0	61.5
Other Africa	14	6	4	3	13	3	0.0	-7.1
Middle East	371	333	30	24	387	60	0.1	4.3
Egypt	63	75	5	4	84	14	0.0	33.3
Iraq	29	25	2	3	30	9	0.0	3.4
Jordan	24	33	6	1	40	4	0.0	66.7
Kuwait	33	32	3	3	38	6	0.0	15.2
Oman	31	20	1	1	22	2	0.0	-29.0
Palestine	22	6	1	1	8	1	0.0	-63.6
Qatar	5	9	2	1	12	1	0.0	140.0
Saudi Arabia	23	30	1	2	33	2	0.0	43.5
Syria	40	33	2	3	38	4	0.0	-5.0
United Arab Emirates	27	32	4	2	38	6	0.0	40.7
Yemen	65	35	1	1	37	9	0.0	-43.1
Other Middle East	9	3	2	2	7	2	0.0	-22.2