



KINGDOM OF CAMBODIA
NATION RELIGION KING



TOURISM STATISTICS REPORT

March 2019

MINISTRY OF TOURISM

Statistics and Tourism Information Department

No. A3, Street 169, Sangkat Veal Vong, Khan 7 Makara, Phnom Penh, Cambodia.

Fax: +855 23 885003

E-mail: kong@tourism.gov.kh

Web site: www.tourism.gov.kh

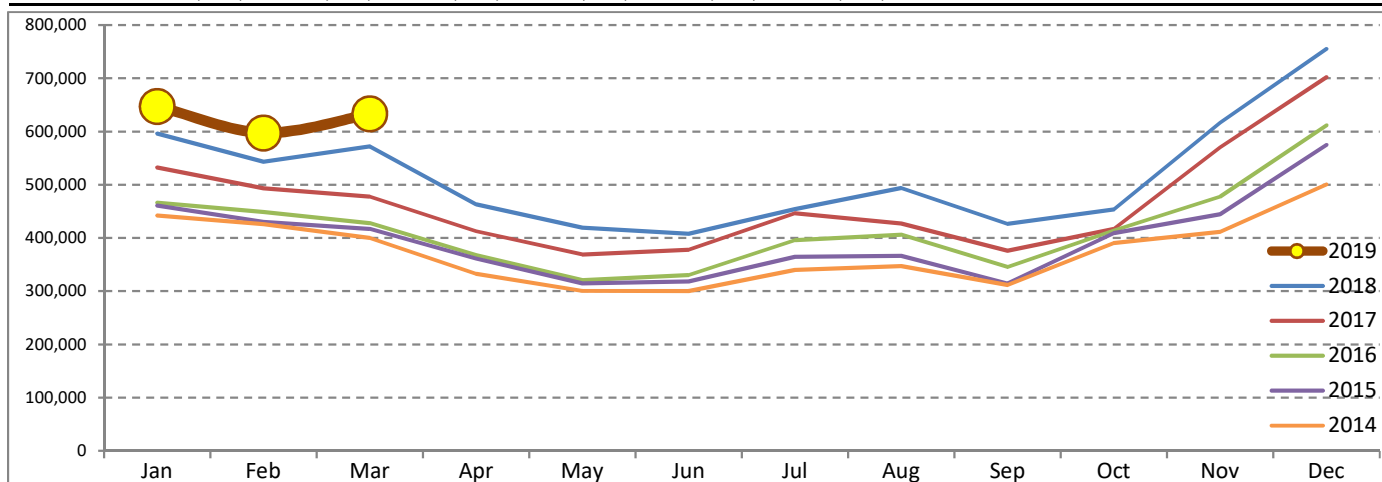
Tourism Highlights

Int'l Tourist Arrivals, Average Length of Stays, Hotel Occupancy & Int'l Tourism Receipts 1993 - 2018

Years	Int'l Tourist Arrivals		Average Length	Hotel Occupancy	Int'l Tourism Receipts
	Number	Change (%)	of Stays (Days)	(%)	(Million US\$)
1993	118,183	-	N/A	N/A	N/A
1994	176,617	49.4	N/A	N/A	N/A
1995	219,680	24.4	8.00	37.0	100
1996	260,489	18.6	7.50	40.0	118
1997	218,843	-16.0	6.40	30.0	103
1998	286,524	30.9	5.20	40.0	166
1999	367,743	28.3	5.50	44.0	190
2000	466,365	26.8	5.50	45.0	228
2001	604,919	29.7	5.50	48.0	304
2002	786,524	30.0	5.80	50.0	379
2003	701,014	-10.9	5.50	50.0	347
2004	1,055,202	50.5	6.30	52.0	578
2005	1,421,615	34.7	6.30	52.0	832
2006	1,700,041	19.6	6.50	54.8	1,049
2007	2,015,128	18.5	6.50	54.8	1,400
2008	2,125,465	5.5	6.65	62.7	1,595
2009	2,161,577	1.7	6.45	63.6	1,561
2010	2,508,289	16.0	6.45	65.7	1,786
2011	2,881,862	14.9	6.50	66.2	1,912
2012	3,584,307	24.4	6.30	68.5	2,210
2013	4,210,165	17.5	6.75	69.5	2,547
2014	4,502,775	7.0	6.50	67.6	2,736
2015	4,775,231	6.1	6.80	70.2	3,012
2016	5,011,712	5.0	6.30	68.9	3,212
2017	5,602,157	11.8	6.60	71.3	3,638
2018	6,201,077	10.7	7.00	72.2	4,375

International Tourist Arrivals to Cambodia

Months	2014	2015	2016	2017	2018	2019	Change (%)				
							15/14	16/15	17/16	18/17	19*/18
Q1	1,267,922	1,307,836	1,342,477	1,502,896	1,711,253	1,877,853	3.1	2.6	11.9	13.9	9.7
Jan	442,045	460,577	466,086	532,206	596,241	647,206	4.2	1.2	14.2	12.0	8.5
Feb	425,801	430,207	448,468	493,316	542,937	597,483	1.0	4.2	10.0	10.1	10.0
Mar	400,076	417,052	427,923	477,374	572,075	633,164	4.2	2.6	11.6	19.8	10.7
Q2	933,446	994,154	1,018,455	1,159,783	1,290,407	0	6.5	2.4	13.9	11.3	
Apr	332,690	361,139	367,684	412,925	463,423		8.6	1.8	12.3	12.2	
May	300,302	314,748	320,601	368,809	419,171		4.8	1.9	15.0	13.7	
Jun	300,454	318,267	330,170	378,049	407,813		5.9	3.7	14.5	7.9	
Q3	998,690	1,044,880	1,147,483	1,250,082	1,374,373	0	4.6	9.8	8.9	9.9	
Jul	340,091	364,325	395,761	446,627	454,056		7.1	8.6	12.9	1.7	
Aug	347,211	366,096	406,214	427,224	494,043		5.4	11.0	5.2	15.6	
Sep	311,388	314,459	345,508	376,231	426,274		1.0	9.9	8.9	13.3	
Q4	1,302,717	1,428,361	1,503,297	1,689,396	1,825,044	0	9.6	5.2	12.4	8.0	
Oct	390,637	408,922	414,077	417,039	453,370		4.7	1.3	0.7	8.7	
Nov	411,501	444,640	477,686	570,471	616,549		8.1	7.4	19.4	8.1	
Dec	500,579	574,799	611,534	701,886	755,125		14.8	6.4	14.8	7.6	
Total	4,502,775	4,775,231	5,011,712	5,602,157	6,201,077	1,877,853	6.1	5.0	11.8	10.7	9.7



Source: Tourism Statistics Department, MOT

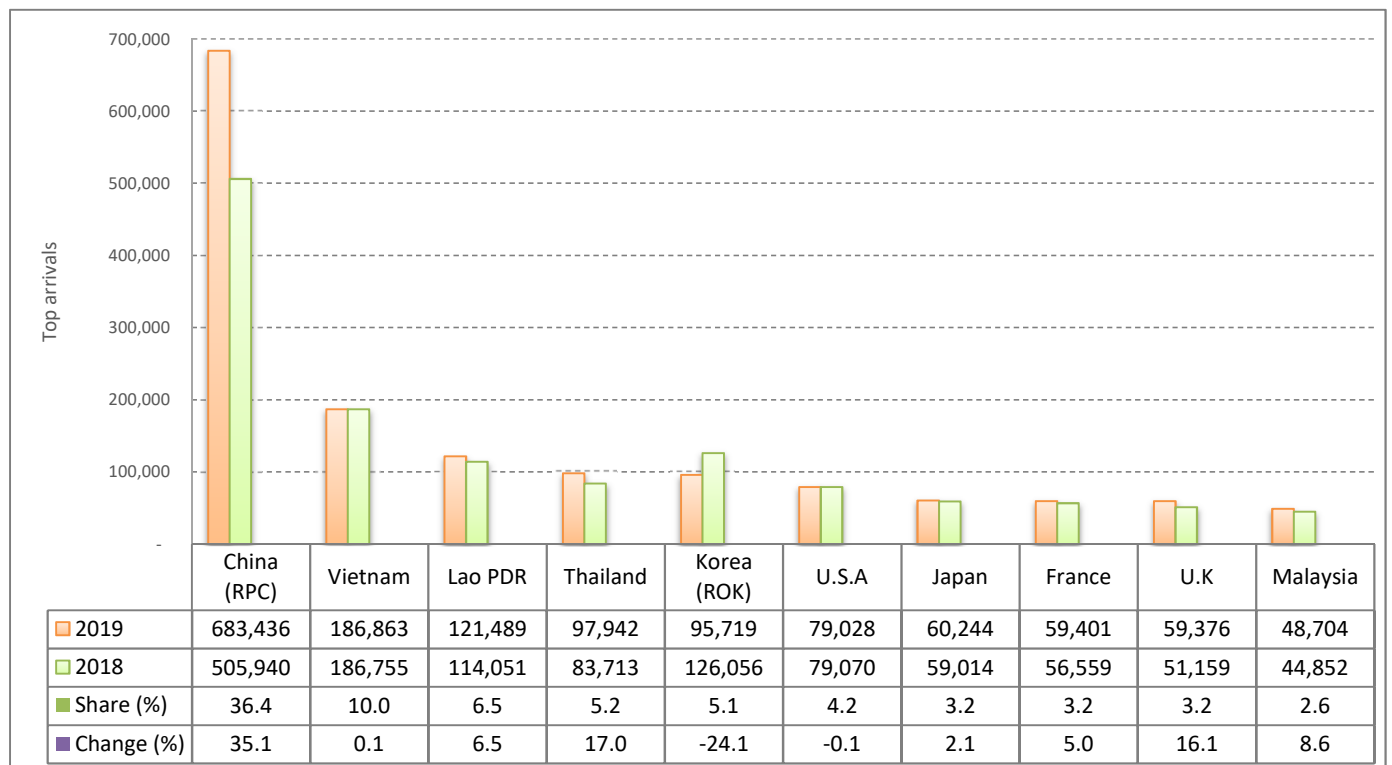
CAMBODIA: TOURISM STATISTICS REPORT IN THE FIRST QUARTER 2019

I. INBOUND TOURISM

1. International tourist arrivals in January - March 2019

	Inbound tourism			Share (%) 2019*	Change (%)	
	2017	2018	2019		18/17	2019*/18
Air	921,410	1,157,632	1,299,122	69.2	25.6	12.2
Phnom Penh Int'l Airport (PNH)	346,603	495,215	581,709	31.0	42.9	17.5
Siem Reap Int'l Airport (REP)	552,477	631,444	583,879	31.1	14.3	-7.5
Kong Keng (KOS)	22,330	30,973	133,534	7.1	38.7	331.1
Land and Waterways	581,486	553,621	578,731	30.8	-4.8	4.5
Land	509,961	498,016	512,309	27.3	-2.3	2.9
Waterways	71,525	55,605	66,422	3.5	-22.3	19.5
Total	1,502,896	1,711,253	1,877,853	100.0	13.9	9.7

2. Top ten markets arrivals in January - March 2019



II. OUTBOUND TOURISM

Outbound tourism in January - March 2019

	Outbound tourism			Change (%)	
	2017	2018	2019	18/17	2019*/18
Cambodian Outbound Tourists	368,345	439,905	456,876	19.4	3.9
International Tourists Departure	1,366,465	1,628,923	1,697,629	19.2	4.2

III. INTERNAL TOURISM

Foreign visitor arrivals to the regions in January - March 2019

	Arrivals			Share (%) 2019*	Change (%)	
	2017	2018	2019		18/17	2019*/18
Phnom Penh & Surrounding	738,491	852,673	1,089,953	49.4	15.5	27.8
Siem Reap Angkor	764,405	858,580	787,900	35.7	12.3	-8.2
Coastal Areas	147,991	248,452	303,285	13.7	67.9	22.1
Eco-tourism Areas	14,763	23,522	25,981	1.2	59.3	10.5
Total	1,665,650	1,983,227	2,207,119	100.0	19.1	11.3

International Tourist Arrivals to Cambodia by Country of Residence in January - March 2019

(by all means of transportation)

Regions Country of Residence	2018	2019			Total	Female	Share	Change
		Purposes of Visit					2019*	2019*/18
		Holiday	Business	Others			(%)	(%)
Grand Total	1,711,253	1,502,812	317,556	57,485	1,877,853	762,653	100.0	9.7
Asia and the Pacific	1,290,753	1,124,159	304,620	32,959	1,461,738	569,546	77.8	13.2
ASEAN (Southeast Asia)	490,307	459,476	39,416	18,768	517,660	186,850	27.6	5.6
Brunei Darussalam	207	426	6	8	440	232	0.0	112.6
Indonesia	13,914	8,794	5,835	782	15,411	4,148	0.8	10.8
Lao PDR	114,051	115,384	248	5,857	121,489	34,908	6.5	6.5
Malaysia	44,852	42,626	4,946	1,132	48,704	14,092	2.6	8.6
Myanmar	5,645	4,294	1,382	395	6,071	2,211	0.3	7.5
Philippines	21,124	17,503	3,245	673	21,421	12,567	1.1	1.4
Singapore	20,046	17,446	1,296	577	19,319	5,335	1.0	-3.6
Thailand	83,713	86,208	6,853	4,881	97,942	30,955	5.2	17.0
Vietnam	186,755	166,795	15,605	4,463	186,863	82,402	10.0	0.1
Northeast Asia	730,507	611,450	260,960	7,322	879,732	358,928	46.8	20.4
China	505,940	438,367	242,425	2,644	683,436	276,062	36.4	35.1
Hong Kong (China)	2,954	897	39	43	979	133	0.1	-66.9
Japan	59,014	52,163	6,749	1,332	60,244	24,307	3.2	2.1
Korea (ROK)	126,056	88,861	4,742	2,116	95,719	42,068	5.1	-24.1
Macau (China)	95	69	7	12	88	11	0.0	-7.4
Mongolia	301	449	21	27	497	224	0.0	65.1
Taiwan (China)	36,147	30,644	6,977	1,148	38,769	16,123	2.1	7.3
Southern Asia	19,565	19,007	2,255	278	21,540	5,870	1.1	10.1
Afghanistan	62	79	10	7	96	31	0.0	54.8
Bangladesh	623	1,083	203	32	1,318	147	0.1	111.6
Bhutan	43	86	4	12	102	36	0.0	137.2
India	16,194	14,954	1,526	107	16,587	4,906	0.9	2.4
Iran	478	367	11	9	387	142	0.0	-19.0
Nepal	715	808	122	54	984	310	0.1	37.6
Pakistan	749	935	156	28	1,119	131	0.1	49.4
Sri Lanka	701	695	223	29	947	167	0.1	35.1
Oceania	45,029	33,530	1,822	6,349	41,701	17,455	2.2	-7.4
Australia	38,080	28,858	1,554	4,957	35,369	14,901	1.9	-7.1
Fiji	60	78	17	25	120	31	0.0	100.0
New Zealand	6,889	4,594	251	1,367	6,212	2,523	0.3	-9.8
Other Asia & the Pacific	5,345	696	167	242	1,105	443	0.1	-79.3
Europe	293,327	273,610	8,462	9,506	291,578	133,121	15.5	-0.6
Northern Europe	75,242	77,125	2,623	857	80,605	35,349	4.3	7.1
Denmark	5,254	5,148	131	49	5,328	2,507	0.3	1.4
Finland	3,038	2,507	80	39	2,626	1,167	0.1	-13.6
Iceland	376	356	10	18	384	179	0.0	2.1
Ireland	3,534	3,009	139	48	3,196	1,326	0.2	-9.6
Norway	4,494	3,220	74	65	3,359	1,627	0.2	-25.3
Sweden	7,387	6,006	187	143	6,336	2,742	0.3	-14.2
United Kingdom	51,159	56,879	2,002	495	59,376	25,801	3.2	16.1
Western Europe	122,669	111,814	3,925	7,526	123,265	53,728	6.6	0.5
Austria	4,317	4,432	79	69	4,580	2,121	0.2	6.1
Belgium	6,047	5,758	207	196	6,161	2,902	0.3	1.9
France	56,559	50,967	2,352	6,082	59,401	25,664	3.2	5.0
Germany	38,637	35,360	707	482	36,549	15,790	1.9	-5.4
Luxembourg	237	195	15	16	226	90	0.0	-4.6
Monaco	32	15	4	7	26	5	0.0	-18.8
Netherlands	9,090	8,675	338	268	9,281	4,117	0.5	2.1
Switzerland	7,750	6,412	223	406	7,041	3,039	0.4	-9.1
Central / Eastern Europe	56,141	48,549	963	634	50,146	26,143	2.7	-10.7
Bulgaria	1,059	1,354	30	39	1,423	571	0.1	34.4
Czech Republic	3,471	3,032	35	43	3,110	1,353	0.2	-10.4
Estonia	1,314	568	27	13	608	273	0.0	-53.7
Hungary	2,588	3,118	40	17	3,175	1,574	0.2	22.7
Kazakhstan	826	811	82	29	922	402	0.0	11.6
Kyrgyzstan	87	110	13	12	135	88	0.0	55.2
Latvia	590	351	16	9	376	192	0.0	-36.3
Lithuania	1,098	1,058	12	11	1,081	598	0.1	-1.5
Poland	7,892	8,341	71	37	8,449	4,211	0.4	7.1
Romania	1,495	1,442	50	45	1,537	777	0.1	2.8
Russian Federation	31,122	23,632	384	286	24,302	13,405	1.3	-21.9
Slovakia	1,589	1,239	33	29	1,301	612	0.1	-18.1
Ukraine	2,792	3,330	139	32	3,501	1,998	0.2	25.4
Uzbekistan	218	163	31	32	226	89	0.0	3.7

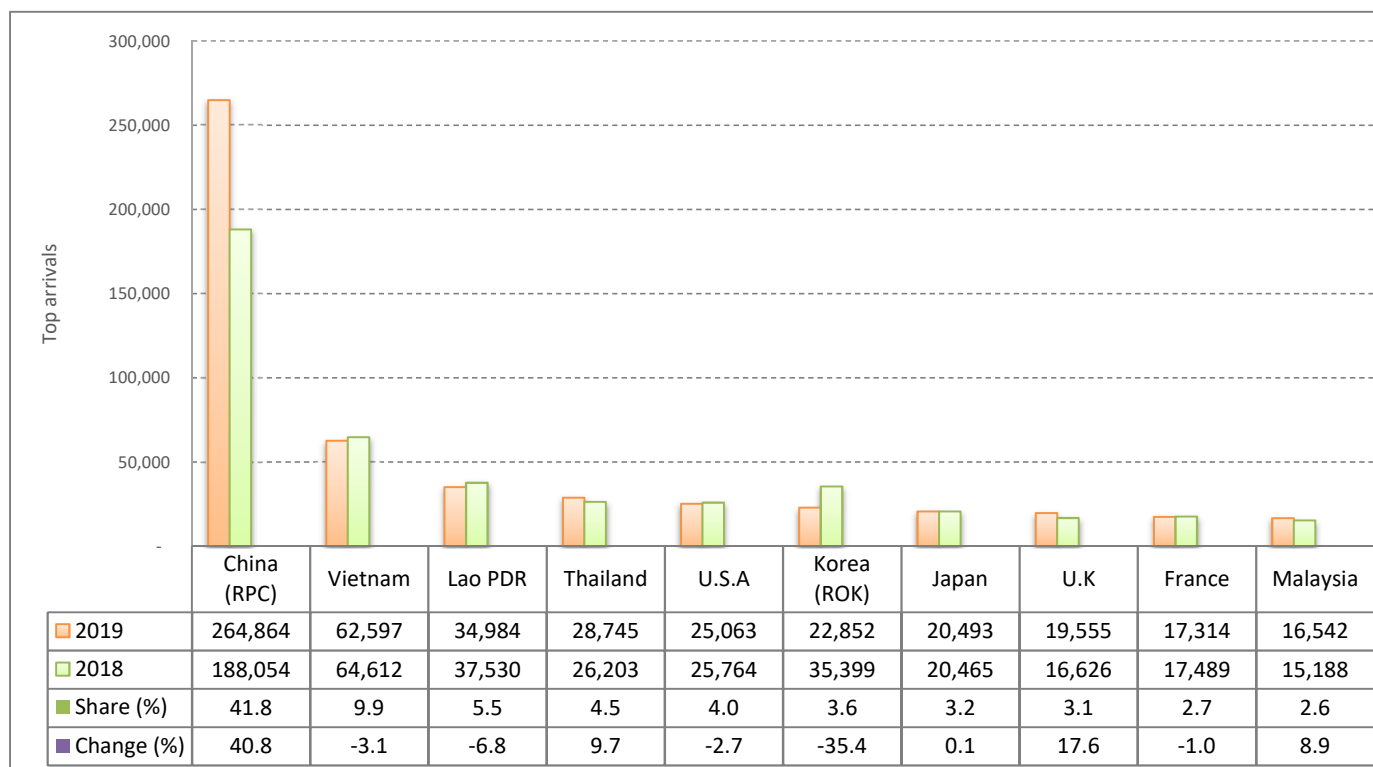
International Tourist Arrivals to Cambodia by Country of Residence in January - March 2019

(by all means of transportation)

Regions Country of Residence	2018	2019			Total	Female	Share	Change
		Purposes of Visit					2019*	2019*/18
		Holiday	Business	Others			(%)	(%)
Grand Total	1,711,253	1,502,812	317,556	57,485	1,877,853	762,653	100.0	9.7
Southern Europe	27,411	26,773	734	315	27,822	13,356	1.5	1.5
Croatia	845	691	28	21	740	339	0.0	-12.4
Greece	680	588	31	26	645	274	0.0	-5.1
Italy	12,967	14,775	333	119	15,227	7,308	0.8	17.4
Malta	153	147	8	9	164	66	0.0	7.2
Portugal	2,206	2,287	49	29	2,365	1,212	0.1	7.2
Serbia	570	544	15	28	587	344	0.0	3.0
Slovenia	653	651	30	19	700	255	0.0	7.2
Spain	9,337	7,090	240	64	7,394	3,558	0.4	-20.8
East Mediterranean Europe	8,875	8,997	145	110	9,252	4,346	0.5	4.2
Israel	5,639	6,819	56	38	6,913	3,298	0.4	22.6
Turkey	3,236	2,178	89	72	2,339	1,048	0.1	-27.7
Other Europe	2,989	352	72	64	488	199	0.0	-83.7
Americas	122,535	100,140	3,942	14,780	118,862	57,834	6.3	-3.0
North America	104,102	87,214	3,665	14,559	105,438	50,468	5.6	1.3
Canada	22,632	20,910	840	2,277	24,027	11,135	1.3	6.2
Mexico	2,400	2,274	47	62	2,383	1,151	0.1	-0.7
United States of America	79,070	64,030	2,778	12,220	79,028	38,182	4.2	-0.1
Central America	554	328	17	22	367	179	0.0	-33.8
Costa Rica	464	239	5	10	254	121	0.0	-45.3
Honduras	49	47	6	5	58	32	0.0	18.4
Jamaica	41	42	6	7	55	26	0.0	34.1
South America	16,363	12,423	220	169	12,812	7,078	0.7	-21.7
Argentina	6,162	2,892	18	25	2,935	1,574	0.2	-52.4
Brazil	5,118	4,243	58	24	4,325	2,391	0.2	-15.5
Chile	2,273	2,364	68	22	2,454	1,322	0.1	8.0
Colombia	1,441	1,090	32	31	1,153	626	0.1	-20.0
Ecuador	244	186	10	21	217	112	0.0	-11.1
Peru	576	480	11	17	508	334	0.0	-11.8
Uruguay	430	1,050	7	16	1,073	634	0.1	149.5
Venezuela	119	118	16	13	147	85	0.0	23.5
Other America	1,516	175	40	30	245	109	0.0	-83.8
Africa	3,309	3,360	416	121	3,897	1,751	0.2	17.8
North Africa	461	815	19	15	849	412	0.0	84.2
Morocco	312	253	9	5	267	104	0.0	-14.4
Sudan	56	44	5	5	54	16	0.0	-3.6
Tunisia	93	518	5	5	528	292	0.0	467.7
Subsaharan Africa	2,584	2,474	383	91	2,948	1,300	0.2	14.1
Cameroon	60	60	13	13	86	17	0.0	43.3
Congo	22	58	5	5	68	19	0.0	209.1
Ghana	39	88	13	10	111	18	0.0	184.6
Kenya	111	92	11	15	118	63	0.0	6.3
Liberia	21	93	5	5	103	16	0.0	390.5
Nigeria	164	51	112	16	179	14	0.0	9.1
South Africa	2,069	1,822	202	12	2,036	1,052	0.1	-1.6
Tanzania	33	88	6	5	99	13	0.0	200.0
Uganda	27	74	8	6	88	41	0.0	225.9
Zimbabwe	38	48	8	4	60	47	0.0	57.9
Other Africa	264	71	14	15	100	39	0.0	-62.1
Middle East	1,329	1,543	116	119	1,778	401	0.1	33.8
Egypt	237	228	18	9	255	49	0.0	7.6
Iraq	89	67	9	33	109	14	0.0	22.5
Jordan	137	150	18	9	177	32	0.0	29.2
Kuwait	138	114	12	17	143	32	0.0	3.6
Oman	59	86	4	5	95	15	0.0	61.0
Palestine	35	15	5	3	23	1	0.0	-34.3
Qatar	29	23	6	4	33	2	0.0	13.8
Saudi Arabia	73	101	6	8	115	20	0.0	57.5
Syria	118	162	8	7	177	42	0.0	50.0
United Arab Emirates	65	330	17	5	352	137	0.0	441.5
Yemen	119	218	6	10	234	29	0.0	96.6
Other Middle East	230	49	7	9	65	28	0.0	-71.7

I. INBOUND TOURISM
1. International tourist arrivals in March 2019

	Inbound tourism			Share (%) 2019*	Change (%)	
	2017	2018	2019		18/17	2019*/18
Air	291,483	395,114	456,443	72.1	35.6	15.5
Phnom Penh Int'l Airport (PNH)	117,418	184,103	214,575	33.9	56.8	16.6
Siem Reap Int'l Airport (REP)	167,018	199,656	183,437	29.0	19.5	-8.1
Kong Keng (KOS)	7,047	11,355	58,431	9.2	61.1	414.6
Land and Waterways	185,891	176,961	176,721	27.9	-4.8	-0.1
Land	166,766	160,334	156,319	24.7	-3.9	-2.5
Waterways	19,125	16,627	20,402	3.2	-13.1	22.7
Total	477,374	572,075	633,164	100.0	19.8	10.7

2. Top ten markets arrivals in March 2019

II. OUTBOUND TOURISM
Outbound tourism in March 2019

	Outbound tourism			Change (%)	
	2017	2018	2019	18/17	2019*/18
Cambodian Outbound Tourists	123,329	150,626	156,127	22.1	3.7
International Tourists Departure	467,874	524,984	559,747	12.2	6.6

III. INTERNAL TOURISM
Foreign visitor arrivals to the regions in March 2019

	Arrivals			Share (%) 2019*	Change (%)	
	2017	2018	2019		18/17	2019*/18
Phnom Penh & Surrounding	252,023	303,697	389,573	52.6	20.5	28.3
Siem Reap Angkor	225,351	268,378	243,591	32.9	19.1	-9.2
Coastal Areas	70,297	79,091	98,851	13.4	12.5	25.0
Eco-tourism Areas	7,207	8,139	8,349	1.1	12.9	2.6
Total	554,878	659,305	740,364	100.0	18.8	12.3

International Tourist Arrivals to Cambodia by Country of Residence in March 2019

(by all means of transportation)

Regions Country of Residence	2018	2019			Total	Female	Share	Change
		Purposes of Visit					2019*	2019*/18
		Holiday	Business	Others			(%)	(%)
Grand Total	572,075	464,133	146,439	22,592	633,164	255,911	100.0	10.7
Asia and the Pacific	442,420	350,393	142,116	14,103	506,612	195,685	80.0	14.5
ASEAN (Southeast Asia)	163,158	142,074	12,528	9,642	164,244	73,148	25.9	0.7
Brunei Darussalam	79	126	1	2	129	61	0.0	63.3
Indonesia	4,607	2,733	2,021	234	4,988	1,440	0.8	8.3
Lao PDR	37,530	30,879	37	4,068	34,984	19,012	5.5	-6.8
Malaysia	15,188	14,378	1,535	629	16,542	5,447	2.6	8.9
Myanmar	1,693	1,219	655	230	2,104	885	0.3	24.3
Philippines	6,247	5,833	967	452	7,252	4,422	1.1	16.1
Singapore	6,999	6,231	424	248	6,903	1,976	1.1	-1.4
Thailand	26,203	24,336	2,339	2,070	28,745	10,652	4.5	9.7
Vietnam	64,612	56,339	4,549	1,709	62,597	29,253	9.9	-3.1
Northeast Asia	257,746	191,415	128,096	2,322	321,833	115,233	50.8	24.9
China	188,054	142,243	121,601	1,020	264,864	91,710	41.8	40.8
Hong Kong (China)	938	188	10	9	207	37	0.0	-77.9
Japan	20,465	17,884	2,329	280	20,493	8,447	3.2	0.1
Korea (ROK)	35,399	20,369	1,764	719	22,852	9,552	3.6	-35.4
Macau (China)	14	31	2	3	36	3	0.0	157.1
Mongolia	60	116	7	5	128	52	0.0	113.3
Taiwan (China)	12,816	10,584	2,383	286	13,253	5,432	2.1	3.4
Southern Asia	6,795	6,599	766	73	7,438	2,025	1.2	9.5
Afghanistan	18	25	2	1	28	4	0.0	55.6
Bangladesh	235	408	73	13	494	58	0.1	110.2
Bhutan	5	17	1	8	26	6	0.0	420.0
India	5,444	5,074	517	33	5,624	1,635	0.9	3.3
Iran	264	196	4	2	202	96	0.0	-23.5
Nepal	260	334	51	10	395	120	0.1	51.9
Pakistan	309	279	53	3	335	32	0.1	8.4
Srilanka	260	266	65	3	334	74	0.1	28.5
Oceania	13,774	10,108	655	1,938	12,701	5,150	2.0	-7.8
Australia	11,712	8,490	553	1,544	10,587	4,381	1.7	-9.6
Fiji	23	25	7	6	38	8	0.0	65.2
New Zealand	2,039	1,593	95	388	2,076	761	0.3	1.8
Other Asia & the Pacific	947	197	71	128	396	129	0.1	-58.2
Europe	89,007	81,146	2,825	2,926	86,897	41,351	13.7	-2.4
Northern Europe	23,351	24,322	857	201	25,380	11,860	4.0	8.7
Denmark	1,490	1,420	54	24	1,498	728	0.2	0.5
Finland	906	622	23	4	649	279	0.1	-28.4
Iceland	62	92	2	3	97	42	0.0	56.5
Ireland	1,218	906	48	11	965	396	0.2	-20.8
Norway	1,295	894	22	9	925	451	0.1	-28.6
Sweden	1,754	1,574	68	49	1,691	734	0.3	-3.6
United Kingdom	16,626	18,814	640	101	19,555	9,230	3.1	17.6
Western Europe	38,532	33,288	1,386	2,377	37,051	17,292	5.9	-3.8
Austria	1,223	1,221	28	14	1,263	581	0.2	3.3
Belgium	1,929	1,581	57	72	1,710	762	0.3	-11.4
France	17,489	14,479	859	1,976	17,314	8,124	2.7	-1.0
Germany	12,943	11,577	244	154	11,975	5,717	1.9	-7.5
Luxembourg	77	60	2	2	64	36	0.0	-16.9
Monaco	5	4	1	1	6	1	0.0	20.0
Netherlands	2,753	2,725	108	65	2,898	1,311	0.5	5.3
Switzerland	2,113	1,641	87	93	1,821	760	0.3	-13.8
Central / Eastern Europe	15,666	13,113	270	194	13,577	7,024	2.1	-13.3
Bulgaria	332	640	5	11	656	159	0.1	97.6
Czech Republic	947	783	5	14	802	343	0.1	-15.3
Estonia	359	143	6	2	151	66	0.0	-57.9
Hungary	794	828	15	1	844	410	0.1	6.3
Kazakhstan	185	211	33	7	251	21	0.0	35.7
Kyrgyzstan	32	27	4	3	34	20	0.0	6.3
Latvia	206	120	5	2	127	68	0.0	-38.3
Lithuania	370	333	6	2	341	210	0.1	-7.8
Poland	2,010	2,016	17	6	2,039	1,033	0.3	1.4
Romania	405	325	5	11	341	178	0.1	-15.8
Russian Federation	8,780	6,506	131	126	6,763	3,853	1.1	-23.0
Slovakia	540	424	5	3	432	208	0.1	-20.0
Ukraine	674	735	30	4	769	442	0.1	14.1
Uzbekistan	32	22	3	2	27	13	0.0	-15.6

International Tourist Arrivals to Cambodia by Country of Residence in March 2019

(by all means of transportation)

Regions Country of Residence	2018	2019			Total	Female	Share	Change
		Purposes of Visit					2019*	2019*/18
		Holiday	Business	Others			(%)	(%)
Grand Total	572,075	464,133	146,439	22,592	633,164	255,911	100.0	10.7
Southern Europe	8,525	7,422	231	78	7,731	3,694	1.2	-9.3
Croatia	234	174	4	2	180	91	0.0	-23.1
Greece	170	178	8	2	188	88	0.0	10.6
Italy	3,672	3,696	117	23	3,836	1,788	0.6	4.5
Malta	51	49	1	3	53	20	0.0	3.9
Portugal	711	708	19	5	732	357	0.1	3.0
Serbia	126	109	2	6	117	75	0.0	-7.1
Slovenia	118	145	6	3	154	39	0.0	30.5
Spain	3,443	2,363	74	34	2,471	1,236	0.4	-28.2
East Mediterranean Europe	2,295	2,886	53	41	2,980	1,429	0.5	29.8
Israel	1,502	2,188	24	18	2,230	1,118	0.4	48.5
Turkey	793	698	29	23	750	311	0.1	-5.4
Other Europe	638	115	28	35	178	52	0.0	-72.1
Americas	39,247	31,246	1,341	5,489	38,076	18,323	6.0	-3.0
North America	34,261	27,614	1,251	5,422	34,287	16,248	5.4	0.1
Canada	7,500	7,364	281	767	8,412	3,793	1.3	12.2
Mexico	997	785	6	21	812	444	0.1	-18.6
United States of America	25,764	19,465	964	4,634	25,063	12,011	4.0	-2.7
Central America	206	112	4	8	124	65	0.0	-39.8
Costa Rica	179	83	1	3	87	43	0.0	-51.4
Honduras	16	19	2	2	23	17	0.0	43.8
Jamaica	11	10	1	3	14	5	0.0	27.3
South America	4,514	3,479	77	49	3,605	1,986	0.6	-20.1
Argentina	1,769	639	2	5	646	339	0.1	-63.5
Brazil	1,329	1,163	15	6	1,184	647	0.2	-10.9
Chile	587	425	44	11	480	225	0.1	-18.2
Colombia	456	266	9	13	288	172	0.0	-36.8
Ecuador	86	72	2	6	80	41	0.0	-7.0
Peru	154	174	1	3	178	113	0.0	15.6
Uruguay	95	708	1	3	712	426	0.1	649.5
Venezuela	38	32	3	2	37	23	0.0	-2.6
Other America	266	41	9	10	60	24	0.0	-77.4
Africa	996	919	124	41	1,084	448	0.2	8.8
North Africa	128	127	5	4	136	47	0.0	6.3
Morocco	79	79	2	1	82	32	0.0	3.8
Sudan	19	9	2	1	12	0	0.0	-36.8
Tunisia	30	39	1	2	42	15	0.0	40.0
Subsaharan Africa	842	785	116	33	934	393	0.1	10.9
Cameroon	21	20	8	4	32	5	0.0	52.4
Congo	7	14	1	1	16	5	0.0	128.6
Ghana	13	24	5	3	32	3	0.0	146.2
Kenya	36	36	5	11	52	21	0.0	44.4
Liberia	12	25	2	2	29	6	0.0	141.7
Nigeria	52	20	33	2	55	1	0.0	5.8
South Africa	666	539	54	5	598	315	0.1	-10.2
Tanzania	3	62	1	2	65	2	0.0	2066.7
Uganda	13	24	2	1	27	13	0.0	107.7
Zimbabwe	19	21	5	2	28	22	0.0	47.4
Other Africa	26	7	3	4	14	8	0.0	-46.2
Middle East	405	429	33	33	495	104	0.1	22.2
Egypt	72	72	8	3	83	22	0.0	15.3
Iraq	29	26	2	4	32	5	0.0	10.3
Jordan	53	49	6	3	58	10	0.0	9.4
Kuwait	45	51	3	6	60	12	0.0	33.3
Oman	23	28	1	2	31	2	0.0	34.8
Palestine	20	7	1	1	9	0	0.0	-55.0
Qatar	13	12	2	2	16	1	0.0	23.1
Saudi Arabia	25	27	1	3	31	2	0.0	24.0
Syria	47	84	4	2	90	33	0.0	91.5
United Arab Emirates	22	24	3	2	29	1	0.0	31.8
Yemen	37	46	1	3	50	11	0.0	35.1
Other Middle East	19	3	1	2	6	5	0.0	-68.4