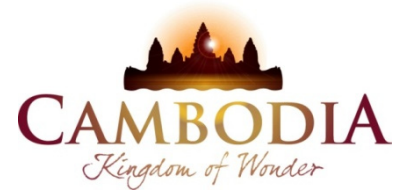




KINGDOM OF CAMBODIA
NATION RELIGION KING



TOURISM STATISTICS REPORT

June 2018

MINISTRY OF TOURISM

Statistics and Tourism Information Department

No. A3, Street 169, Sangkat Veal Vong, Khan 7 Makara, Phnom Penh, Cambodia.

Fax: +855 23 885003

E-mail: kong@tourism.gov.kh

Web site: www.tourism.gov.kh

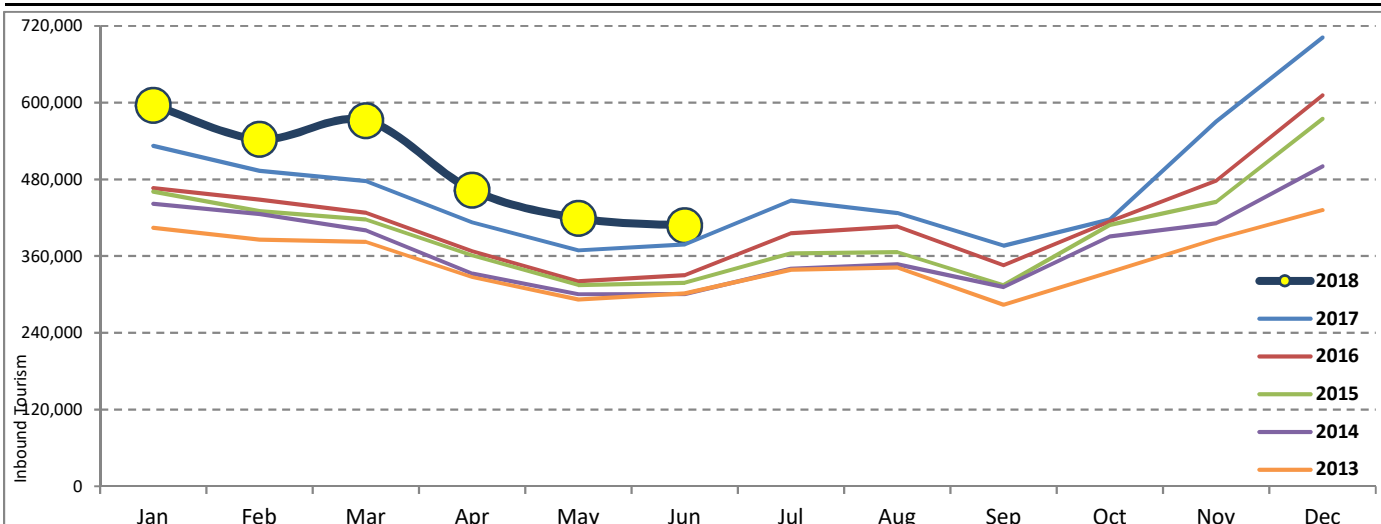
Tourism Highlights

Int'l Tourist Arrivals, Average Length of Stays, Hotel Occupancy & Int'l Tourism Receipts 1993 - 2017

Years	Int'l Tourist Arrivals		Average Length	Hotel Occupancy	Int'l Tourism Receipts
	Number	Change (%)	of Stays (Days)	(%)	(Million US\$)
1993	118,183	-	N/A	N/A	N/A
1994	176,617	49.4	N/A	N/A	N/A
1995	219,680	24.4	8.00	37.0	100
1996	260,489	18.6	7.50	40.0	118
1997	218,843	-16.0	6.40	30.0	103
1998	286,524	30.9	5.20	40.0	166
1999	367,743	28.3	5.50	44.0	190
2000	466,365	26.8	5.50	45.0	228
2001	604,919	29.7	5.50	48.0	304
2002	786,524	30.0	5.80	50.0	379
2003	701,014	-10.9	5.50	50.0	347
2004	1,055,202	50.5	6.30	52.0	578
2005	1,421,615	34.7	6.30	52.0	832
2006	1,700,041	19.6	6.50	54.8	1,049
2007	2,015,128	18.5	6.50	54.8	1,400
2008	2,125,465	5.5	6.65	62.7	1,595
2009	2,161,577	1.7	6.45	63.6	1,561
2010	2,508,289	16.0	6.45	65.7	1,786
2011	2,881,862	14.9	6.50	66.2	1,912
2012	3,584,307	24.4	6.30	68.5	2,210
2013	4,210,165	17.5	6.75	69.5	2,547
2014	4,502,775	7.0	6.50	67.6	2,736
2015	4,775,231	6.1	6.80	70.2	3,012
2016	5,011,712	5.0	6.30	68.9	3,212
2017	5,602,157	11.8	6.60	71.3	3,638

International Tourist Arrivals to Cambodia

Months	2013	2014	2015	2016	2017	2018	Change (%)				
							14/13	15/13	16/15	17/16	18*/17
Q1	1,172,072	1,267,922	1,307,836	1,342,477	1,502,896	1,711,253	8.2	3.1	2.6	11.9	13.9
Jan	404,106	442,045	460,577	466,086	532,206	596,241	9.4	4.2	1.2	14.2	12.0
Feb	385,760	425,801	430,207	448,468	493,316	542,937	10.4	1.0	4.2	10.0	10.1
Mar	382,206	400,076	417,052	427,923	477,374	572,075	4.7	4.2	2.6	11.6	19.8
Q2	920,527	933,446	994,154	1,018,455	1,159,783	1,290,407	1.4	6.5	2.4	13.9	11.3
Apr	327,000	332,690	361,139	367,684	412,925	463,423	1.7	8.6	1.8	12.3	12.2
May	292,115	300,302	314,748	320,601	368,809	419,171	2.8	4.8	1.9	15.0	13.7
Jun	301,412	300,454	318,267	330,170	378,049	407,813	-0.3	5.9	3.7	14.5	7.9
Q3	964,612	998,690	1,044,880	1,147,483	1,250,082	0	3.5	4.6	9.8	8.9	
Jul	338,761	340,091	364,325	395,761	446,627		0.4	7.1	8.6	12.9	
Aug	342,064	347,211	366,096	406,214	427,224		1.5	5.4	11.0	5.2	
Sep	283,787	311,388	314,459	345,508	376,231		9.7	1.0	9.9	8.9	
Q4	1,152,954	1,302,717	1,428,361	1,503,297	1,689,396	0	13.0	9.6	5.2	12.4	
Oct	334,410	390,637	408,922	414,077	417,039		16.8	4.7	1.3	0.7	
Nov	386,737	411,501	444,640	477,686	570,471		6.4	8.1	7.4	19.4	
Dec	431,807	500,579	574,799	611,534	701,886		15.9	14.8	6.4	14.8	
Total	4,210,165	4,502,775	4,775,231	5,011,712	5,602,157	3,001,660	7.0	6.1	5.0	11.8	12.7



Source: Tourism Statistics Department, MOT

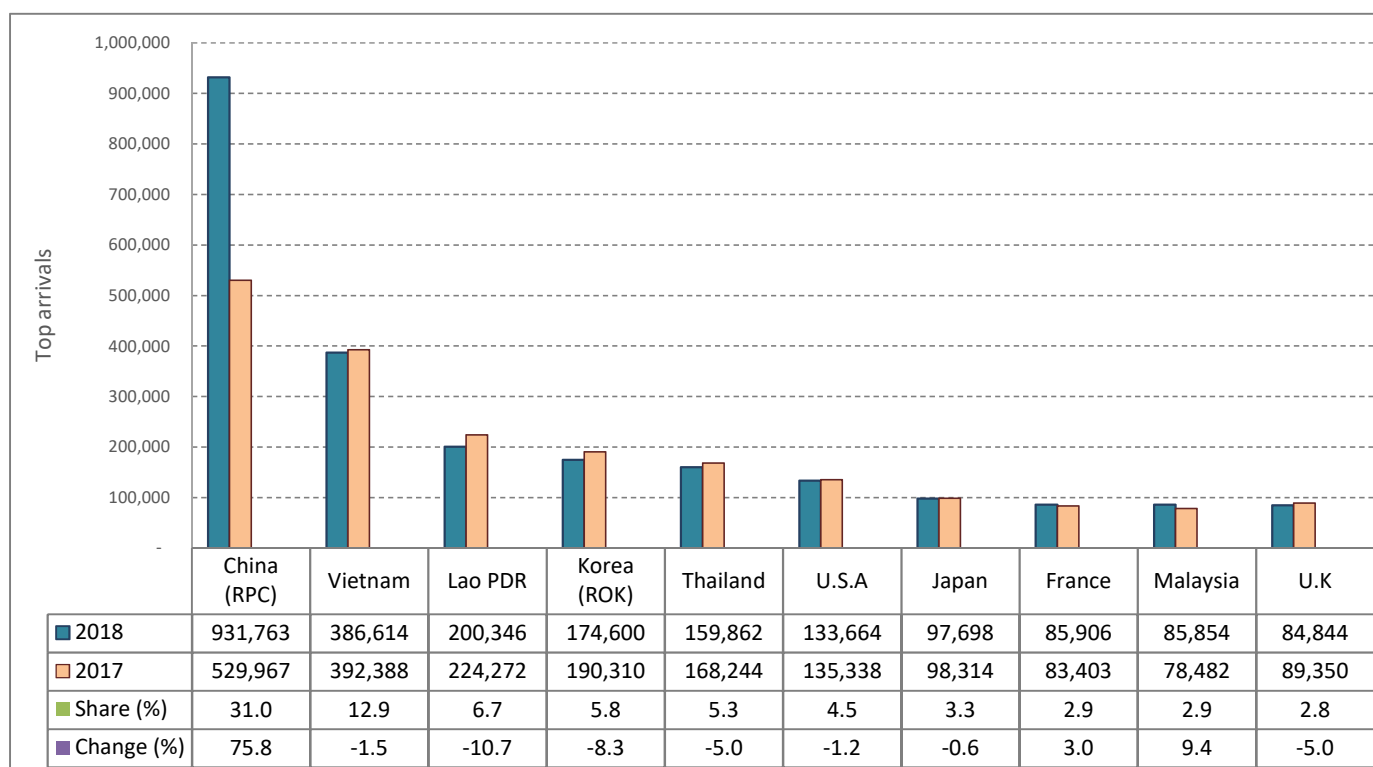
CAMBODIA: TOURISM STATISTICS REPORT IN THE FIRST SEMESTER 2018

I. INBOUND TOURISM

1. International tourist arrivals in January - June 2018

	Inbound tourism			Share (%) 2018*	Change (%)	
	2016	2017	2018		17/16	2018*/17
Air	1,304,826	1,605,664	2,004,123	66.8	23.1	24.8
Phnom Penh Int'l Airport (PNH)	559,329	667,529	927,542	30.9	19.3	39.0
Siem Reap Int'l Airport (REP)	741,671	904,384	1,006,504	33.5	21.9	11.3
Kong Keng (KOS)	3,826	33,751	70,077	2.3	782.1	107.6
Land and Waterways	1,056,106	1,057,015	997,537	33.2	0.1	-5.6
Land	969,444	967,490	918,609	30.6	-0.2	-5.1
Waterways	86,662	89,525	78,928	2.6	3.3	-11.8
Total	2,360,932	2,662,679	3,001,660	100.0	12.8	12.7

2. Top ten markets arrivals in January - June 2018



II. OUTBOUND TOURISM

Outbound tourism in January - June 2018

	Outbound tourism			Change (%)	
	2016	2017	2018	17/16	2018*/17
Cambodian Outbound Tourists	699,654	842,008	964,276	20.3	14.5
International Tourists Departure	2,223,903	2,544,911	2,892,692	14.4	13.7

III. INTERNAL TOURISM

Foreign visitor arrivals to the regions in January - June 2018

	Arrivals			Share (%) 2018*	Change (%)	
	2016	2017	2018		17/16	2018*/17
Phnom Penh & Surrounding	1,265,250	1,429,283	1,644,689	46.0	13.0	15.1
Siem Reap Angkor	1,095,682	1,233,396	1,356,961	37.9	12.6	10.0
Coastal Areas	357,296	389,741	532,472	14.9	9.1	36.6
Eco-tourism Areas	35,607	39,368	42,994	1.2	10.6	9.2
Total	2,753,835	3,091,788	3,577,116	100.0	12.3	15.7

International Tourist Arrivals to Cambodia by Country of Residence in January - June 2018

(by all means of transportation)

Regions Country of Residence	2017	2018			Total	Female	Share	Change
		Purposes of Visit					2018*	2018*/17
		Holiday	Business	Others			(%)	(%)
Grand Total	2,662,679	2,632,210	276,296	93,154	3,001,660	1,348,306	100.0	12.7
Asia and the Pacific	1,988,888	2,043,672	254,881	52,491	2,351,044	1,052,936	78.3	18.2
ASEAN (Southeast Asia)	982,973	865,468	56,842	26,444	948,754	443,193	31.6	-3.5
Brunei Darussalam	455	323	10	34	367	148	0.0	-19.3
Indonesia	23,047	16,883	6,914	1,821	25,618	7,523	0.9	11.2
Lao PDR	224,272	195,926	112	4,308	200,346	124,608	6.7	-10.7
Malaysia	78,482	76,923	6,800	2,131	85,854	27,649	2.9	9.4
Myanmar	9,181	8,504	1,327	816	10,647	4,411	0.4	16.0
Philippines	49,712	35,713	5,114	1,801	42,628	22,876	1.4	-14.3
Singapore	37,192	33,240	2,117	1,461	36,818	11,362	1.2	-1.0
Thailand	168,244	141,271	11,676	6,915	159,862	59,603	5.3	-5.0
Vietnam	392,388	356,685	22,772	7,157	386,614	185,013	12.9	-1.5
Northeast Asia	883,927	1,075,755	190,708	13,504	1,279,967	562,906	42.6	44.8
China	529,967	768,500	158,750	4,513	931,763	415,816	31.0	75.8
Hong Kong (China)	7,902	6,207	376	106	6,689	3,224	0.2	-15.4
Japan	98,314	82,437	12,370	2,891	97,698	35,067	3.3	-0.6
Korea (ROK)	190,310	162,111	8,648	3,841	174,600	80,864	5.8	-8.3
Macau (China)	233	242	12	26	280	75	0.0	20.2
Mongolia	367	371	20	24	415	214	0.0	13.1
Taiwan (China)	56,834	55,887	10,532	2,103	68,522	27,646	2.3	20.6
Southern Asia	32,613	33,120	3,359	595	37,074	11,318	1.2	13.7
Afghanistan	92	129	8	14	151	27	0.0	64.1
Bangladesh	949	1,135	212	61	1,408	163	0.0	48.4
Bhutan	109	52	7	48	107	78	0.0	-1.8
India	27,472	27,678	2,260	295	30,233	9,858	1.0	10.1
Iran	490	613	25	23	661	216	0.0	34.9
Nepal	1,415	1,083	192	52	1,327	396	0.0	-6.2
Pakistan	845	1,179	231	62	1,472	216	0.0	74.2
Sri Lanka	1,241	1,251	424	40	1,715	364	0.1	38.2
Oceania	84,263	65,142	3,112	9,364	77,618	32,732	2.6	-7.9
Australia	70,122	55,171	2,647	7,232	65,050	27,179	2.2	-7.2
Fiji	196	82	24	24	130	41	0.0	-33.7
New Zealand	13,945	9,889	441	2,108	12,438	5,512	0.4	-10.8
Other Asia & the Pacific	5,112	4,187	860	2,584	7,631	2,787	0.3	49.3
Europe	451,746	408,594	13,858	16,292	438,744	201,478	14.6	-2.9
Northern Europe	126,800	113,472	4,354	1,706	119,532	50,187	4.0	-5.7
Denmark	8,212	7,639	349	122	8,110	3,587	0.3	-1.2
Finland	4,149	4,089	120	94	4,303	1,781	0.1	3.7
Iceland	669	520	8	13	541	175	0.0	-19.1
Ireland	6,235	5,715	246	58	6,019	2,605	0.2	-3.5
Norway	6,739	5,781	105	96	5,982	2,601	0.2	-11.2
Sweden	11,446	9,237	278	218	9,733	3,952	0.3	-15.0
United Kingdom	89,350	80,491	3,248	1,105	84,844	35,486	2.8	-5.0
Western Europe	199,164	164,075	6,406	11,622	182,103	83,158	6.1	-8.6
Austria	6,657	5,984	121	200	6,305	2,802	0.2	-5.3
Belgium	10,792	8,463	319	366	9,148	4,219	0.3	-15.2
France	83,403	72,578	3,976	9,352	85,906	39,891	2.9	3.0
Germany	68,513	52,655	1,061	897	54,613	24,414	1.8	-20.3
Luxembourg	492	365	14	16	395	201	0.0	-19.7
Monaco	50	32	7	12	51	20	0.0	2.0
Netherlands	16,146	13,663	539	267	14,469	6,557	0.5	-10.4
Switzerland	13,111	10,335	369	512	11,216	5,054	0.4	-14.5
Central / Eastern Europe	68,810	75,721	1,437	469	77,627	41,337	2.6	12.8
Bulgaria	1,681	1,841	29	15	1,885	932	0.1	12.1
Czech Republic	4,935	4,376	65	29	4,470	2,109	0.1	-9.4
Estonia	1,551	2,269	135	16	2,420	902	0.1	56.0
Hungary	3,723	3,290	42	19	3,351	1,558	0.1	-10.0
Kazakhstan	1,228	1,012	147	27	1,186	609	0.0	-3.4
Kyrgyzstan	122	147	11	13	171	58	0.0	40.2
Latvia	730	841	19	11	871	435	0.0	19.3
Lithuania	1,762	1,341	66	26	1,433	738	0.0	-18.7
Poland	10,332	10,876	108	47	11,031	5,552	0.4	6.8
Romania	1,873	1,984	31	22	2,037	1,068	0.1	8.8
Russian Federation	34,771	41,491	609	145	42,245	24,176	1.4	21.5
Slovakia	2,114	2,085	29	35	2,149	1,030	0.1	1.7
Ukraine	3,664	3,933	93	31	4,057	2,086	0.1	10.7
Uzbekistan	324	235	53	33	321	84	0.0	-0.9

International Tourist Arrivals to Cambodia by Country of Residence in January - June 2018

(by all means of transportation)

Regions Country of Residence	2017	2018			Total	Female	Share	Change
		Purposes of Visit					2018*	2018*/17
		Holiday	Business	Others			(%)	(%)
Grand Total	2,662,679	2,632,210	276,296	93,154	3,001,660	1,348,306	100.0	12.7
Southern Europe	40,843	40,915	1,046	342	42,303	18,910	1.4	3.6
Croatia	955	1,181	23	21	1,225	585	0.0	28.3
Greece	1,002	1,077	28	16	1,121	483	0.0	11.9
Italy	18,600	17,490	567	144	18,201	7,769	0.6	-2.1
Malta	239	183	15	9	207	86	0.0	-13.4
Portugal	3,694	3,333	81	23	3,437	1,663	0.1	-7.0
Serbia	705	677	12	10	699	369	0.0	-0.9
Slovenia	826	856	27	22	905	343	0.0	9.6
Spain	14,822	16,118	293	97	16,508	7,612	0.5	11.4
East Mediterranean Europe	12,419	12,032	222	379	12,633	5,893	0.4	1.7
Israel	7,886	7,830	86	109	8,025	3,809	0.3	1.8
Turkey	4,533	4,202	136	270	4,608	2,084	0.2	1.7
Other Europe	3,710	2,379	393	1,774	4,546	1,993	0.2	22.5
Americas	213,011	171,272	6,741	23,891	201,904	90,238	6.7	-5.2
North America	177,850	143,847	6,138	22,933	172,918	75,667	5.8	-2.8
Canada	38,141	30,695	1,303	2,945	34,943	15,921	1.2	-8.4
Mexico	4,371	4,213	36	62	4,311	2,038	0.1	-1.4
United States of America	135,338	108,939	4,799	19,926	133,664	57,708	4.5	-1.2
Central America	631	1,111	121	34	1,266	470	0.0	100.6
Costa Rica	452	847	99	15	961	344	0.0	112.6
Honduras	95	86	10	9	105	34	0.0	10.5
Jamaica	84	178	12	10	200	92	0.0	138.1
South America	32,376	25,022	353	350	25,725	13,313	0.9	-20.5
Argentina	11,884	8,137	17	54	8,208	4,549	0.3	-30.9
Brazil	10,670	7,765	139	179	8,083	3,953	0.3	-24.2
Chile	4,316	3,709	58	22	3,789	1,873	0.1	-12.2
Colombia	2,521	2,908	91	35	3,034	1,575	0.1	20.3
Ecuador	399	363	7	14	384	203	0.0	-3.8
Peru	822	1,019	17	24	1,060	522	0.0	29.0
Uruguay	1,361	970	8	11	989	556	0.0	-27.3
Venezuela	403	151	16	11	178	82	0.0	-55.8
Other America	2,154	1,292	129	574	1,995	788	0.1	-7.4
Africa	6,065	6,402	623	317	7,342	3,153	0.2	21.1
North Africa	531	666	36	41	743	302	0.0	39.9
Morocco	326	435	14	17	466	215	0.0	42.9
Sudan	60	78	15	12	105	23	0.0	75.0
Tunisia	145	153	7	12	172	64	0.0	18.6
Subsaharan Africa	4,820	5,467	555	226	6,248	2,719	0.2	29.6
Cameroon	60	95	16	18	129	26	0.0	115.0
Congo	58	171	15	9	195	72	0.0	236.2
Ghana	117	291	15	11	317	134	0.0	170.9
Kenya	166	226	18	33	277	143	0.0	66.9
Liberia	29	1,153	50	77	1,280	503	0.0	4313.8
Nigeria	992	95	180	20	295	42	0.0	-70.3
South Africa	3,068	3,282	238	30	3,550	1,716	0.1	15.7
Tanzania	175	49	7	10	66	22	0.0	-62.3
Uganda	78	38	8	7	53	26	0.0	-32.1
Zimbabwe	77	67	8	11	86	35	0.0	11.7
Other Africa	714	269	32	50	351	132	0.0	-50.8
Middle East	2,969	2,270	193	163	2,626	501	0.1	-11.6
Egypt	444	344	27	14	385	83	0.0	-13.3
Iraq	119	377	34	9	420	57	0.0	252.9
Jordan	351	260	20	8	288	68	0.0	-17.9
Kuwait	324	209	13	17	239	29	0.0	-26.2
Oman	103	77	8	10	95	11	0.0	-7.8
Palestine	74	36	17	11	64	8	0.0	-13.5
Qatar	74	39	8	9	56	10	0.0	-24.3
Saudi Arabia	132	131	8	16	155	21	0.0	17.4
Syria	269	216	10	12	238	30	0.0	-11.5
United Arab Emirates	114	84	16	13	113	21	0.0	-0.9
Yemen	397	274	11	7	292	68	0.0	-26.4
Other Middle East	568	223	21	37	281	95	0.0	-50.5

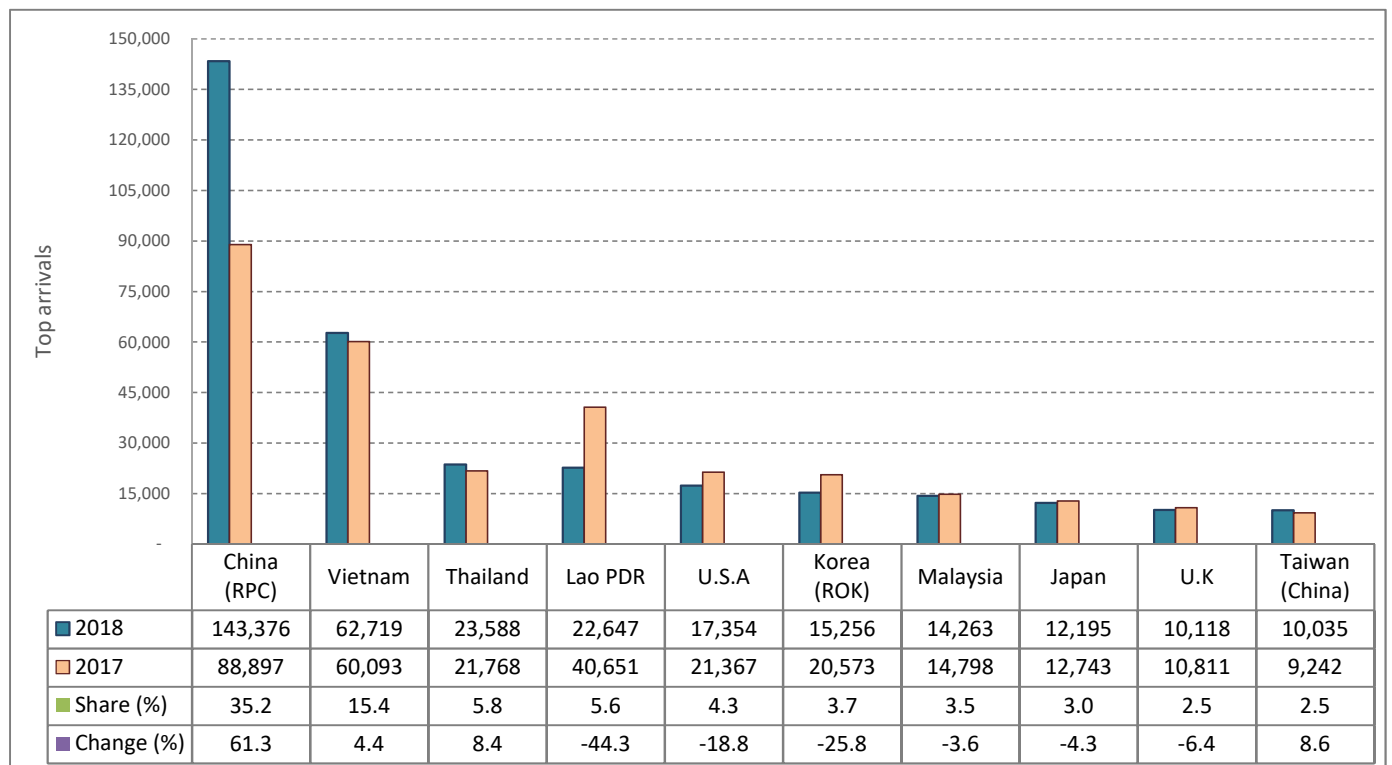
CAMBODIA: TOURISM STATISTICS REPORT IN JUNE 2018

I. INBOUND TOURISM

1. International tourist arrivals in June 2018

	Inbound tourism			Share (%) 2018*	Change (%)	
	2016	2017	2018		17/16	2018*/17
Air	170,886	223,109	277,179	68.0	30.6	24.2
Phnom Penh Int'l Airport (PNH)	88,257	107,770	142,276	34.9	22.1	32.0
Siem Reap Int'l Airport (REP)	82,168	111,198	120,773	29.6	35.3	8.6
Kong Keng (KOS)	461	4,141	14,130	3.5	798.3	241.2
Land and Waterways	159,284	154,940	130,634	32.0	-2.7	-15.7
Land	154,260	150,596	124,295	30.5	-2.4	-17.5
Waterways	5,024	4,344	6,339	1.6	-13.5	45.9
Total	330,170	378,049	407,813	100.0	14.5	7.9

2. Top ten markets arrivals in June 2018



II. OUTBOUND TOURISM

Outbound tourism in June 2018

	Outbound tourism			Change (%)	
	2016	2017	2018	17/16	2018*/17
Cambodian Outbound Tourists	110,473	141,981	153,212	28.5	7.9
International Tourists Departure	289,967	405,421	389,469	39.8	-3.9

III. INTERNAL TOURISM

Foreign visitor arrivals to the regions in June 2018

	Arrivals			Share (%) 2018*	Change (%)	
	2016	2017	2018		17/16	2018*/17
Phnom Penh & Surrounding	210,131	237,289	257,040	48.3	12.9	8.3
Siem Reap Angkor	120,039	140,760	150,773	28.3	17.3	7.1
Coastal Areas	37,956	50,727	116,889	22.0	33.6	130.4
Eco-tourism Areas	5,338	5,631	7,408	1.4	5.5	31.6
Total	373,464	434,407	532,110	100.0	16.3	22.5

International Tourist Arrivals to Cambodia by Country of Residence in June 2018

(by all means of transportation)

Regions Country of Residence	2017	2018			Total	Female	Share	Change
		Purposes of Visit					2018*	2018*/17
		Holiday	Business	Others			(%)	(%)
Grand Total	378,049	347,413	47,575	12,825	407,813	175,351	100.0	7.9
Asia and the Pacific	305,125	289,975	43,926	7,241	341,142	147,569	83.7	11.8
ASEAN (Southeast Asia)	155,246	128,791	9,007	3,679	141,477	64,774	34.7	-8.9
Brunei Darussalam	48	56	2	4	62	32	0.0	29.2
Indonesia	3,098	2,675	831	49	3,555	1,171	0.9	14.8
Lao PDR	40,651	21,978	16	653	22,647	14,179	5.6	-44.3
Malaysia	14,798	13,094	993	176	14,263	4,195	3.5	-3.6
Myanmar	1,079	1,294	219	38	1,551	493	0.4	43.7
Philippines	7,231	6,172	837	73	7,082	3,930	1.7	-2.1
Singapore	6,480	5,614	339	57	6,010	2,110	1.5	-7.3
Thailand	21,768	20,447	1,798	1,343	23,588	8,577	5.8	8.4
Vietnam	60,093	57,461	3,972	1,286	62,719	30,087	15.4	4.4
Northeast Asia	132,339	147,584	33,859	2,093	183,536	76,988	45.0	38.7
China	88,897	114,659	28,069	648	143,376	62,554	35.2	61.3
Hong Kong (China)	836	2,172	329	43	2,544	1,455	0.6	204.3
Japan	12,743	9,632	2,092	471	12,195	3,567	3.0	-4.3
Korea (ROK)	20,573	13,120	1,565	571	15,256	5,683	3.7	-25.8
Macau (China)	26	78	3	6	87	13	0.0	234.6
Mongolia	22	34	5	4	43	21	0.0	95.5
Taiwan (China)	9,242	7,889	1,796	350	10,035	3,695	2.5	8.6
Southern Asia	5,665	4,843	566	125	5,534	1,654	1.4	-2.3
Afghanistan	17	41	2	3	46	10	0.0	170.6
Bangladesh	128	170	33	2	205	28	0.1	60.2
Bhutan	6	11	1	35	47	13	0.0	683.3
India	4,826	4,010	381	61	4,452	1,442	1.1	-7.7
Iran	98	59	2	5	66	19	0.0	-32.7
Nepal	247	174	41	6	221	55	0.1	-10.5
Pakistan	126	167	44	8	219	38	0.1	73.8
Sri Lanka	217	211	62	5	278	49	0.1	28.1
Oceania	11,199	8,441	463	1,103	10,007	3,918	2.5	-10.6
Australia	9,268	7,070	379	820	8,269	3,239	2.0	-10.8
Fiji	23	13	5	4	22	4	0.0	-4.3
New Zealand	1,908	1,358	79	279	1,716	675	0.4	-10.1
Other Asia & the Pacific	676	316	31	241	588	235	0.1	-13.0
Europe	42,387	34,515	2,356	2,110	38,981	15,971	9.6	-8.0
Northern Europe	14,152	12,301	854	325	13,480	5,196	3.3	-4.7
Denmark	556	951	210	19	1,180	304	0.3	112.2
Finland	300	405	15	12	432	175	0.1	44.0
Iceland	58	32	2	3	37	10	0.0	-36.2
Ireland	1,141	679	50	6	735	343	0.2	-35.6
Norway	596	358	15	27	400	169	0.1	-32.9
Sweden	690	492	41	45	578	216	0.1	-16.2
United Kingdom	10,811	9,384	521	213	10,118	3,979	2.5	-6.4
Western Europe	17,106	11,652	948	1,442	14,042	5,667	3.4	-17.9
Austria	299	641	36	63	740	294	0.2	147.5
Belgium	1,007	645	55	42	742	314	0.2	-26.3
France	8,373	5,263	531	1,161	6,955	2,836	1.7	-16.9
Germany	4,982	2,950	151	97	3,198	1,281	0.8	-35.8
Luxembourg	27	7	2	3	12	3	0.0	-55.6
Monaco	4	2	1	1	4	1	0.0	0.0
Netherlands	1,465	1,352	91	35	1,478	589	0.4	0.9
Switzerland	949	792	81	40	913	369	0.2	-3.8
Central / Eastern Europe	5,553	5,567	325	59	5,951	2,724	1.5	7.2
Bulgaria	105	504	11	1	516	225	0.1	391.4
Czech Republic	434	185	9	4	198	89	0.0	-54.4
Estonia	105	722	116	5	843	158	0.2	702.9
Hungary	196	222	11	3	236	115	0.1	20.4
Kazakhstan	149	79	14	2	95	48	0.0	-36.2
Kyrgyzstan	16	8	2	2	12	4	0.0	-25.0
Latvia	48	92	4	3	99	47	0.0	106.3
Lithuania	94	74	7	1	82	47	0.0	-12.8
Poland	600	666	17	4	687	325	0.2	14.5
Romania	147	138	5	1	144	60	0.0	-2.0
Russian Federation	3,276	2,412	98	19	2,529	1,356	0.6	-22.8
Slovakia	97	114	2	7	123	60	0.0	26.8
Ukraine	262	325	20	3	348	174	0.1	32.8
Uzbekistan	24	26	9	4	39	16	0.0	62.5

International Tourist Arrivals to Cambodia by Country of Residence in June 2018

(by all means of transportation)

Regions Country of Residence	2017	2018			Total	Female	Share	Change
		Purposes of Visit					2018*	2018*/17
		Holiday	Business	Others			(%)	(%)
Grand Total	378,049	347,413	47,575	12,825	407,813	175,351	100.0	7.9
Southern Europe	4,121	4,080	178	56	4,314	1,937	1.1	4.7
Croatia	74	102	4	3	109	51	0.0	47.3
Greece	73	176	9	6	191	78	0.0	161.6
Italy	1,439	1,124	81	22	1,227	462	0.3	-14.7
Malta	17	16	2	1	19	10	0.0	11.8
Portugal	369	337	22	2	361	172	0.1	-2.2
Serbia	40	23	1	2	26	14	0.0	-35.0
Slovenia	32	58	4	3	65	34	0.0	103.1
Spain	2,077	2,244	55	17	2,316	1,116	0.6	11.5
East Mediterranean Europe	962	711	38	64	813	289	0.2	-15.5
Israel	518	382	11	25	418	140	0.1	-19.3
Turkey	444	329	27	39	395	149	0.1	-11.0
Other Europe	493	204	13	164	381	138	0.1	-22.7
Americas	29,353	20,239	1,113	3,320	24,672	10,725	6.0	-15.9
North America	25,753	16,711	872	3,185	20,768	9,104	5.1	-19.4
Canada	3,758	2,433	154	252	2,839	1,255	0.7	-24.5
Mexico	628	539	12	24	575	261	0.1	-8.4
United States of America	21,367	13,739	706	2,909	17,354	7,588	4.3	-18.8
Central America	70	366	97	10	473	113	0.1	575.7
Costa Rica	45	276	89	5	370	72	0.1	722.2
Honduras	17	15	3	2	20	6	0.0	17.6
Jamaica	8	75	5	3	83	35	0.0	937.5
South America	3,216	3,071	135	102	3,308	1,463	0.8	2.9
Argentina	1,035	363	3	5	371	176	0.1	-64.2
Brazil	1,116	1,013	80	71	1,164	513	0.3	4.3
Chile	352	598	33	6	637	214	0.2	81.0
Colombia	383	863	12	7	882	435	0.2	130.3
Ecuador	61	54	2	3	59	32	0.0	-3.3
Peru	114	140	2	5	147	70	0.0	28.9
Uruguay	73	30	1	4	35	17	0.0	-52.1
Venezuela	82	10	2	1	13	6	0.0	-84.1
Other America	314	91	9	23	123	45	0.0	-60.8
Africa	796	2,110	132	122	2,364	958	0.6	197.0
North Africa	63	47	3	9	59	27	0.0	-6.3
Morocco	42	30	1	2	33	18	0.0	-21.4
Sudan	8	7	1	5	13	6	0.0	62.5
Tunisia	13	10	1	2	13	3	0.0	0.0
Subsaharan Africa	592	2,051	124	105	2,280	922	0.6	285.1
Cameroon	9	23	2	4	29	5	0.0	222.2
Congo	5	142	9	2	153	62	0.0	2960.0
Ghana	8	225	8	1	234	103	0.1	2825.0
Kenya	14	78	4	8	90	38	0.0	542.9
Liberia	6	1,120	45	71	1,236	490	0.3	20500.0
Nigeria	70	10	20	8	38	4	0.0	-45.7
South Africa	412	418	32	5	455	208	0.1	10.4
Tanzania	50	17	2	3	22	6	0.0	-56.0
Uganda	12	5	1	1	7	1	0.0	-41.7
Zimbabwe	6	13	1	2	16	5	0.0	166.7
Other Africa	141	12	5	8	25	9	0.0	-82.3
Middle East	388	574	48	32	654	128	0.2	68.6
Egypt	45	33	6	3	42	6	0.0	-6.7
Iraq	23	269	21	1	291	42	0.1	1165.2
Jordan	62	66	3	2	71	30	0.0	14.5
Kuwait	20	24	3	6	33	6	0.0	65.0
Oman	4	10	2	3	15	4	0.0	275.0
Palestine	8	4	1	2	7	1	0.0	-12.5
Qatar	10	2	1	1	4	1	0.0	-60.0
Saudi Arabia	11	32	3	5	40	5	0.0	263.6
Syria	54	35	1	1	37	1	0.0	-31.5
United Arab Emirates	32	11	2	3	16	1	0.0	-50.0
Yemen	16	81	2	1	84	27	0.0	425.0
Other Middle East	103	7	3	4	14	4	0.0	-86.4